

## PE4000B Node Box



### Description

The PE4000B is an industrial computer that can be embedded in data loggers, low-voltage power supply systems, and other equipment on the production work site. Compared to previous embedded industrial computers developed and manufactured by Pro-face, the new product is 60% smaller by volume and 38% lighter by weight.

The PE4000B Series industrial computer is equipped with up to six serial ports and three Ethernet ports, and responds to the need for peace-of-mind when used in conjunction with a data logger for data collection. It can also be used with automatic guided vehicles (AGVs), picking carts, and similar equipment powered by 12 to 24 V batteries.

The new PE4000B Series industrial computer can be combined with Pro-face's remote application software, Pro-face Remote HMI to enable remote confirmation and operation via a tablet or similar device. By supporting remote confirmation and operation, the need for a permanent monitor for embedded industrial computers can be eliminated, allowing the operator to check and operate machinery at any time using a tablet or smartphone.

### Features

- Check real time production data, and check battery or location with Pro-face mobility solutions for remote access
- Highly compact design and mountable via DIN rail or directly, allowing freedom of product placement and convenient installation
- No moving/rotating parts such as fan or HDD
- Energy efficient design with low heat emission
- Available with either a 9 to 36 VDC or 12 to 24 VDC power supply in a total of six models
- Equipped with up to six serial ports, three Ethernet ports, five USB ports, and eight digital I/O ports
- CF/CFast card compatible with embedded OS and SSD for use in environments with a lot of vibration

## Atom N2600 – PE4000B

## Fanless Industrial PC

## General Specifications

<b>Models</b>	PE4000B
<b>CPU</b>	Intel Atom Dual Core N2600 1.6 GHz
<b>Rated Input Voltage</b>	12 to 24 Vdc $\pm 5\%$
<b>Power Consumption</b>	16 W (Typically)
<b>External Dimensions</b>	264.5 x 69.19 x 133 mm (10.41 x 2.72 x 5.24 in.)
<b>Storage Temperature</b>	-40 to 85 °C (-40 to 185 °F)
<b>Ambient Operating Temp</b>	w/ air flow: 0 to 60 °C (32 to 140 °F) w/o airflow: 0 to 50 °C (32 to 122 °F)
<b>Environmental Ratings</b>	IP40
<b>Certifications</b>	CE, UL UL60950, RCM (C-Tick), EAC (GOST-R), RoHS, REACH, KC, CCC



## Product Specifications

Part Number to Order	PFXPEBBD42DNN1	PFXPEBBD42CNN1	PFXPEBBD21BNN1	PFXPEBBD40NNN1
<b>Operating System</b>	Windows® Embedded Standard 7 (32bit)	Windows® Embedded Standard 7 (32bit)	Windows® Embedded Standard 2009 (32bit)	None
<b>Storage</b>	SSD 80GB	CFast Card 16GB	CFast card 8GB	None
<b>Expansion Slot</b>	Mini PCIe (full size) x 1	Mini PCIe (full size) x 1	Mini PCIe (full size) x 1	Mini PCIe (full size) x 1
<b>RAM</b>	4 GB (DDR3 800 MHz)	4 GB (DDR3 800 MHz)	2 GB (DDR3 800 MHz)	4 GB (DDR3 800 MHz)
<b>Serial Port</b>	RS-232C x2, RS-232/422/485 x4	RS-232C x2, RS-232/422/485 x4	RS-232C x2, RS-232/422/485 x4	RS-232C x2, RS-232/422/485 x4
<b>Ethernet</b>	x3	x3	x3	x3
<b>USB</b>	TypeA (USB2.0) x5	TypeA (USB2.0) x5	TypeA (USB2.0) x5	TypeA (USB2.0) x5
<b>Digital I/O</b>	8 bits (selectable I/O)	8 bits (selectable I/O)	8 bits (selectable I/O)	8 bits (selectable I/O)
<b>Video Interface</b>	Analog RGB x1, HDMI x1	Analog RGB x1, HDMI x1	Analog RGB x1, HDMI x1	Analog RGB x1, HDMI x1
<b>Sound Interface</b>	Line-in, Line-out, Mic-in	Line-in, Line-out, Mic-in	Line-in, Line-out, Mic-in	Line-in, Line-out, Mic-in

## Atom N270 – PE4000B

## Fanless Industrial PC

## General Specifications

<b>Models</b>	PE4000B
<b>CPU</b>	Intel Atom N270 1.6 GHz
<b>Rated Input Voltage</b>	9 to 36 Vdc $\pm 5\%$
<b>Power Consumption</b>	15 W (Typically)
<b>External Dimensions</b>	254.8 x 58.7 x 149.2 mm (10.03 x 2.31 x 5.88 in.)
<b>Storage Temperature</b>	-40 to 85 °C (-40 to 185 °F)
<b>Ambient Operating Temp</b>	w/ air flow: 0 to 70 °C (32 to 158 °F) w/o airflow: 0 to 60 °C (32 to 140°F)
<b>Environmental Ratings</b>	IP40
<b>Certifications</b>	CE, UL UL60950, RCM (C-Tick), EAC (GOST-R), RoHS, REACH, KC, CCC



## Product Specifications

Part Number to Order	PFXPBAD21ANN1	PFXPBAD20NNN1
<b>Operating System</b>	Windows® Embedded Standard 2009 (32bit)	None
<b>Storage</b>	CF Card 8GB	None
<b>Expansion Slot</b>	Mini PCIe (half size) x 1	Mini PCIe (half size) x 1
<b>RAM</b>	2 GB (DDR2 533 MHz)	2 GB (DDR2 533 MHz)
<b>Serial Port</b>	RS-232C x2	RS-232C x2
<b>Ethernet</b>	x1	x1
<b>USB</b>	TypeA (USB2.0) x2	TypeA (USB2.0) x2
<b>Digital I/O</b>	n/a	n/a
<b>Video Interface</b>	Analog RGB x 1	Analog RGB x 1
<b>Sound Interface</b>	n/a	n/a

## PS4000B Node Box

The PS4000B features an Core™2 Duo P8400 or Atom™ N270 processor, creating a powerful system for any production floor. Its aluminum housing adds to the PCs durability, while its multiple I/O ports lend to its flexibility.

Mate this industrial computer with one of Pro-face's Flat Panel Monitors for a complete industrial computing solution. The PS4000B can also be installed remotely from one of our FP3000 Series units.



### General Specifications

<b>Models</b>	PS4000B (Build to Order)
<b>Operating System</b>	Windows® XP Professional SP3, Windows® 7 Ultimate, Windows® Embedded Standard 2009, Windows® Embedded Standard
<b>Serial Port (COM)</b>	RS-232C x2
<b>Ethernet Interface</b>	x2
<b>USB</b>	TypeA (USB2.0) x5
<b>Storage Temperature</b>	-20 to 60 °C (-4 to 140 °F)
<b>Ambient Operating Temp</b>	0 to 50 °C (32 to 122 °F)
<b>Environmental Ratings</b>	IP20
<b>Rated Input Voltage</b>	24 Vdc ±25 %
<b>Power Consumption</b>	90 W (Core 2 Duo), 60W (Atom)
<b>External Dimensions</b>	W217 x H270 x D251 mm (W8.54 x H10.63 x D9.89 in.)



# PS4000B Node Box

## Product Options

[Configure PS4000B](#)
[Find Distributor](#)

<b>Expansion Slot</b>	1 slot = 1 PCI 2 slots = 1 PCI + 1 PCIe(x4) 2 slots = 2 PCI 5 slots = 2 PCI + 3 PCIe(x1) 5 slots = 4 PCI + 1 PCIe(x1)
<b>CPU Type</b>	Atom N270 Core 2 Duo P8400
<b>Power Supply</b>	DC DC with I/F for UPS battery unit DC with Noise Filter for Marine Certification DC with I/F for UPS battery unit and Noise Filter for Marine Certification
<b>RAM</b>	1GB 2GB 3GB (2GB+1GB) 4GB (2GB+2GB) 6GB (4GB+2GB) 8GB (4GB+4GB)
<b>Operating System</b>	None Windows Embedded Standard 2009 Windows XP Pro Japanese Windows XP Pro MUI Windows Embedded Standard 7 (32bit) Windows 7 Ultimate (32bit) Windows 7 Ultimate (64bit)
<b>Storage Device</b>	None CF 4GB CF 8GB HDD 500GB SSD 60GB
<b>Storage Device</b>	None CF 4GB CF 8GB SSD 80GB SSD 32GB SHD 250GB
<b>Slide-in Slot</b>	None DVD multi drive SSD 32GB SSD 80GB SHD 250GB DVD+SHD 250GB DVD+PSD 32GB DVD+SSD 80GB
<b>Options</b>	None DVI-D I/F Expansion Board COM Expansion Board RS-232C/422/485 DVI-D I/F Expansion Board + COM Expansion Board RS-232C/422/485

## RC6700 Rugged Panel PC

The RC6700 Rugged Panel PC 15" is constructed with completely sealed stainless steel type 4/4X, IP 65/66, NEMA 4/4X enclosure with environmental ratings on the entire system. It supports a wide operating temperature, comes with pre-installed Windows Embedded operating system; and is powered by high-performance and low power consumption Intel® Atom™ processor N2600 1.6 GHz in fanless industrial-grade high-bright LCD flat touch screen panel. It offers Class I Div 2, Groups A, B, C, D, CENELEC's ATEX 94/9/EC Zone 2, IEC's IECEx Zone 2, Ex nA, and Ex ic certification which are primarily designed for the volatile and harsh environments of Oil, Gas, and oilfield equipment & services.



### General Specifications

<b>Part Number to Order</b>	<b>HAR15PFA03-48018-R01</b>
<b>Display Type and Size</b>	15" diagonal, Active matrix TFT LCD (4:3)
<b>Operating System</b>	Windows® Embedded Standard 7 E
<b>Graphic Display Resolution</b>	1,024 x 768 pixels (XGA)
<b>Processor</b>	Intel® Atom Processor N2600 1.6 GHz
<b>System Memory</b>	4GB DDR3 1333 MHz, up to 4GB
<b>Storage</b>	32GB mSATA Solid State Drive
<b>Touch Panel Type</b>	Analog resistive 5-wire
<b>Serial Port</b>	1x RS-232C (IP65 connector and cable)
<b>Ethernet</b>	1x RJ 45-10/100/1000 Mbps (IP65 connector and cable)
<b>USB</b>	2x USB2.0 (IP65 connector and cable)
<b>Operating Temperature</b>	-20 to 50 °C (-4 to 122 °F)
<b>Ingress Protection</b>	NEMA4 IP65 (360° protection)
<b>Humidity</b>	30 to 90% RH (non-condensing)
<b>Operating Shock Protection</b>	15G, 11ms duration
<b>Operating Vibration Protection</b>	5 Hz ~ 500 Hz/ 1 Grms/ 3 Axis
<b>Packing Vibration Protection</b>	5 Hz ~ 500 Hz/ 2.16 Grms/ 3 Axis
<b>Rated Input Voltage</b>	12Vdc, 9v~36vdc
<b>Power Consumption</b>	25W (typ.) (max. backlight & high CPU loading)
<b>Dimensions</b>	W396 x H310 x D49 mm

# PS5000 Series Industrial PC

## Description

The PS5000 Series is the newest line up in the Pro-face Industrial PC family, offering high connectivity, reliability, and design. Our built-to-order lineup allows customers to choose the product that best suits their purposes.

On the iPC offer, we will introduce new Node Box PCs with Intel Core i7, and Celeron CPUs which can be used in a modular & flexible Panel PC configuration with 15", 19" or 22" display screens.



## Features

**Modular:** Combine the Box type and the Display in a range of sizes from 15 to the ultra-large 22 inches. Flexibly change the functions and sizes.

**Slim:** Panel-integrated type - drastically slimmer profile with less wasted space and high performance retained featuring optimized design for equipment that requires space-saving.

Featuring an optimized industrial design for a 66% cut in the required depth. No fan means a smaller operation panel with no need to worry about exhaust heat, resulting in less cost to you.

**Box:** Stationary box type suitable for an environment and equipment that does not require operation and display. Both landscape and portrait placement available. Using Pro-face Remote HMI makes monitoring possible only when needed.

**Powerful:** A generous helping of the latest technology amounts to a surprising edge in performance. This means more power for equipment requiring high-speed equipment with different usability via HMI and PC.

**Smart:** Intuitive gestures for zooming and switching screens similar to popular tablets and smartphones for even smoother operation. Scroll, swipe, pinch, two-point touch, etc.

**Built to order:** Choose a configuration that best suits your budget and purpose. Configuration requirements can be selected online, eliminating the need to look through models to find the best match.

**Remote solutions:** Includes a proprietary tablet /smartphone app designed for use in industrial settings. The app offers a revolutionary debugging and remote monitoring experience.



## PS5000 Slim Panel PC

The PS5000 Series is the newest line up in the Pro-face Industrial PC family. The three display sizes, 10", 15" and 19" offer a slim design, and low reactivity glass that creates less glare and higher contrast. This powerful IPC features a Core™ i3-4010U or Atom E3827 1.7 GHz processor, creating a powerful system for any production floor. Its aluminum housing adds to the PC's durability, while its multiple I/O ports lend to its flexibility. These units provide more robust storage options, as well as a bright and crisp TFT color display.

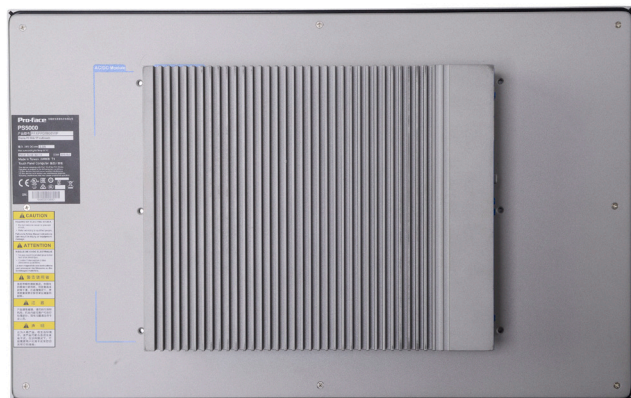

[Configure PS5000 Core i3](#)
[Find Distributor](#)
[Configure PS5000 Atom](#)

### General Specifications

Models	PS5501W	PS5701W	PS5711W
<b>Display Type and Size</b>	10.1" Color LCD	15.6" (wide 16:9) Color LCD	15.6" (wide 16:9) Color LCD
<b>CPU</b>	Atom E3827, 1.75 GHz	Atom E3827, 1.75 GHz	Core i3-4010U 1.7GHz
<b>Operating System</b>	Windows® 7 Ultimate (64 bit) MUI, Windows® Embedded Standard 7 Premium (64 bit) MUI, Windows® Embedded 8.1 Industry (64 bit) MUI		
<b>Graphic Display Resolution</b>	1,280 x 800 pixels WXGA TFT	1,366 x 768 pixels FWXGA TFT	1,366 x 768 pixels FWXGA TFT
<b>Touch Panel Type</b>	Multi-touch (5 point simultaneous touch) projected capacitive		
<b>Serial Port (COM)</b>	RS-232C x1, RS-232C / 422 / 485 (D-Sub 9-pin plug) x1		
<b>Ethernet</b>	10/100/1000 Mbit/s (RJ-45 Modular Jack) x2		
<b>USB</b>	USB 3.0 x1, USB 2.0 x1 (Type A)	USB 3.0 x1, USB 2.0 x1 (Type A)	USB 3.0 x2 (Type A)
<b>Backlight</b>	LED		
<b>Storage Temperature</b>	– 20 to 60° C [– 4 to 140° F]		
<b>Surrounding Air Temperature</b>	When using SSD / CFast running: 0 to 55° C [32 to 131° F] When using HDD running: 0 to 45° C [32 to 113° F]		
<b>Environmental Ratings</b>	IP66 Front Panel		
<b>Rated Input Voltage</b>	DC Power Model: 24 Vdc ±20 % When using AC power supply unit: 100 to 240 Vac *1		
<b>Power Consumption</b>	12 W (max 24 W)	18 W (max 60 W)	18 W (max 60 W)
<b>External Dimensions</b>	W283.1 x H202.3 x D61.3 mm [W11.15 x H7.96 x D2.41 in.]	W419.7 x H269.0 x D61.9 mm [W16.52 x H10.59 x D2.44 in.]	W419.7 x H269.0 x D56.7 mm [W16.52 x H10.59 x D2.23 in.]
<b>Panel Cutout Dimensions</b>	W274.6 x H193.8 mm [W10.81 x H7.63 in.]	W412.4 x H261.7 mm [W16.24 x H10.30 in.]	W412.4 x H261.7 mm [W16.24 x H10.30 in.]



# PS5000 Slim Panel PC



PS-5811W 19"



PS-5821W 19" - Enclosed

## General Specifications

Models	PS5811W	PS5821W
Display Type and Size	18.5" (wide 16:9) Color LCD	18.5" (wide 16:9) Color LCD Enclosed
CPU	Core i3-4010U 1.7GHz	Core i3-4010U 1.7GHz
Operating System	Windows® 7 Ultimate (64 bit) MUI, Windows® Embedded Standard 7 Premium (64 bit) MUI, Windows® Embedded 8.1 Industry (64 bit) MUI	
Graphic Display Resolution	1,366 x 768 pixels FWXGA TFT	
Touch Panel Type	Multi-touch (5 point simultaneous touch) projected capacitive	
Serial Port (COM)	RS-232C x1, RS-232C / 422 / 485 (D-Sub 9-pin plug) x1	RS-232C (M12 A-coding, 8-pin plug) x1
Ethernet	10/100/1000 Mbit/s (RJ-45 Modular Jack) x2	10/100/1000 Mbit/s (M12 A-coding, 8-pin socket) x2
USB	USB 3.0 x1, USB 2.0 x1 (Type A)	USB 2.0 x1 (M12 A-coding, 8-pin socket)
Backlight	LED	
Storage Temperature	- 20 to 60 °C (- 4 to 140 °F)	
Surrounding Air Temperature	When using SSD / CFast running: 0 to 55°C [32 to 131°F] When using HDD running: 0 to 45°C [32 to 113°F]	
Environmental Ratings	IP66 Front Panel	IP66 All Around
Rated Input Voltage	DC Power Model: 24 Vdc ±20 % When using AC power supply unit: 100 to 240 Vac	DC Power Model: 24 Vdc ±20 % (M12 A-coding, 8-pin female)
Power Consumption	28 W (max 60 W)	35 W (max 60 W)
External Dimensions	W488.0 x H309.6 x D56.7 mm [W19.21 x H12.17 x D2.23 in.]	W488.0 x H309.6 x D65 mm [W19.21 x H12.17 x D2.56 in.]
Panel Cutout Dimensions	W479.3 x H300.3 mm [W18.87 x H11.82 in.]	n/a

## PS5000 Modular Display + Box PC

PS5000 Series is the highest performance industrial PC, offering high connectivity, reliability, and design. Our built-to-order lineup allows customers to choose the product that best suits their purposes with new Node Box PCs with Intel Core i7, and Celeron CPUs which can be used in a modular & flexible Panel PC configuration with 15", 19" or 22" display screens—flexibly change the functions and sizes.

Also available as a stand-alone, the stationary box type is suitable for an environment and equipment that does not need operation and display. Both landscape and portrait mounting available.


[Configure PS5000 Core i7](#)
[Find Distributor](#)
[Configure PS5000 Celeron](#)


### General Specifications

Models	PS5000B	
<b>CPU</b>	Celeron 2980U 1.6 GHz	Core i7-4650U 1.7 GHz
<b>Main Memory</b>	4 GB or 8 GB, DDR3L 1600 MHz, SO-DIM SDRAM	8 GB or 16 GB, DDR3L 1600 MHz, SO-DIM SDRAM
<b>Operating System</b>	Windows® 7 Ultimate (64 bit) MUI, Windows® Embedded Standard 7 Premium (64 bit) MUI, Windows® Embedded 8.1 Industry (64 bit) MUI	
<b>Serial ATA</b>	HDD or SSD x2, CFast x1, mSATA x1	
<b>Serial Port (COM)</b>	RS-232C / 422 / 485 (D-Sub 9-pin plug) x1	
<b>Ethernet</b>	10/100/1000 Mbit/s (RJ-45 Modular Jack) x2	
<b>USB</b>	USB 3.0 x2, USB 2.0 x2 (Type A)	
<b>Storage Temperature</b>	– 20 to 60 °C (– 4 to 140 °F)	
<b>Surrounding Air Temperature</b>	When using SSD / CFast running: 0 to 55°C [32 to 131°F] When using HDD running: 0 to 45°C [32 to 113°F]	
<b>Environmental Ratings</b>	IP66 Front Panel	
<b>Rated Input Voltage</b>	DC Power Model: 24 Vdc ±20 % When using AC power supply unit: 100 to 240 Vac	
<b>Power Consumption</b>	15" single touch box: 17.8W typical, 33.6 W max	15" single touch box: 18.1 W typical, 38.4 max
<b>External Dimensions</b>	W283.1 x H202.3 x D61.3 mm [W11.15 x H7.96 x D2.41 in.]	W419.7 x H269.0 x D61.9 mm [W16.52 x H10.59 x D2.44 in.]

# PS5000 Modular Display + Box PC

## General Specifications

Models	PS5700T		PS5700W	PS5800W	PS5900W
Display Type and Size	15" Color LCD		15.6" (wide 16:9) Color LCD	18.5" (wide 16:9) Color LCD	21.5" (wide 16:9) Color LCD
CPU			Celeron 2980U 1.6GHz Core i7-4650U 1.7 GHz		
Main Memory			8 GB or 16 GB, DDR3L 1600 MHz, SO-DIM SDRAM (Core i7) 4 GB or 8 GB, DDR3L 1600 MHz, SO-DIM SDRAM (Celeron)		
Operating System			Windows® 7 Ultimate (64 bit) MUI, Windows® Embedded Standard 7 Premium (64 bit) MUI, Windows® Embedded 8.1 Industry (64 bit) MUI		
Graphic Display Resolution	1,024 x 768 px XGA TFT		1,366 x 768 px FWXGA TFT	1,366 x 768 px FWXGA TFT	1,980 x 1,080 px Full HD TFT
Touch Panel Type	Resistive single touch		Multi-touch (5 point simultaneous touch) projected capacitive		
Serial Port (COM)			RS-232C / 422 / 485 (D-Sub 9-pin plug) x1		
Ethernet			10/100/1000 Mbit/s (RJ-45 Modular Jack) x2		
USB	3.0 x2, 2.0 x2, 2.0 x1 (front) (Type A)		3.0 x2, 2.0 x2 (Type A)	3.0 x2, 2.0 x2 (Type A)	3.0 x2, 2.0 x2 (Type A)
Backlight			LED Lifespan > 50,000 h @ 25° C [77° F]		
Storage Temperature			– 30 to 70° C [– 22 to 158° F]		
Surrounding Air Temperature			When using SSD / CFast running: 0 to 55°C [32 to 131°F], When using PCI/PCIe: 0 to 45°C [32 to 113°F] When using HDD running: 0 to 45°C [32 to 113°F], When using 2x mPCI + Display module: 0 to 45°C [32 to 113°F]		
Enironmental Ratings			IP66 Front Panel		
Rated Input Voltage			DC Power Model: 24 Vdc ±20 % When using AC power supply unit: 100 to 240 Vac		
Power Consumption	Core i7	25.9 W (max 44.9 W)	27.1 W (max 46.1 W)	28.4 W (max 48.1 W)	30.5 W (max 50.7 W)
	Celeron	25.5 W (max 39.9 W)	26.6 W (max 40.9 W)	27.9 W (max 43.1 W)	29.9 W (max 45.2 W)
External Dimensions	0 Slot	W390.7 x H290.0 x D93.2 mm [W15.38 x H11.42 x D3.67 in.]	W419.7 x H269.0 x D93.2 mm [W16.52 x H10.59 x D3.67 in.]	W488.3 x H309.0 x D93.2 mm [W19.21 x H12.17 x D3.67 in.]	W558.4 x H349.8 x D93.2 mm [W21.98 x H13.77 x D3.67 in.]
	2 Slot	W390.7 x H290.0 x D131.2 mm [W15.38 x H11.42 x D5.16 in.]	W419.7 x H269.0 x D131.2 mm [W16.52 x H10.59 x D5.16 in.]	W488.0 x H309.6 x D131.2 mm [W19.21 x H12.17 x D5.16 in.]	W558.4 x H349.8 x D131.2 mm [W21.98 x H13.77 x D5.16 in.]
Panel Cutout Dimensions		W383.5 x H282.5 mm [W15.09 x H11.12 in.]	W412.4 x H261.7 mm [W16.24 x H10.30 in.]	W479.3 x H300.3 mm [W18.87 x H11.82 in.]	W550.3 x H341.8 mm [W21.66 x H13.45 in.]

## PS4600 Panel PC

The PS4600 features an Core™ i3 or Celeron 827 processor, creating a powerful system for any production floor. Its aluminum housing adds to the PC's durability, while its multiple I/O ports lend to its flexibility. These units provide more robust storage options, along with quick and easy storage expansion. The bright and crisp TFT color display is also complemented with different screen size options.



### General Specifications

<b>Models</b>	PS4600 (Build to Order)
<b>Operating System</b>	Windows® XP Professional SP3 (32bit), Windows® 7 Ultimate (32 or 64bit), Windows® Embedded Standard 2009 (32bit), Windows® Embedded Standard 7 Premium (32bit)
<b>Display Type and Size</b>	TFT Color LCD 12.1"
<b>Graphic Display Resolution</b>	1,024 x 768 pixels (XGA)
<b>Touch Panel Type</b>	Analog resistive film
<b>Serial Port (COM)</b>	RS-232C x2
<b>Ethernet Interface</b>	x2
<b>USB</b>	TypeA (USB2.0) x5
<b>Backlight</b>	LED
<b>Storage Temperature</b>	-20 to 60 °C (-4 to 140 °F)
<b>Ambient Operating Temp</b>	Operating temperature dependant on unit model. See PS4600 manual for exact temperature.
<b>Environmental Ratings</b>	IP65, Type 4X (Indoor use only)
<b>Rated Input Voltage</b>	24Vdc or 100 to 240 Vac
<b>Power Consumption</b>	130 W (max.)
<b>External Dimensions</b>	Dimensions dependant on unit model. See PS4000 Manual for exact dimensions.
<b>Panel Cutout Dimentions</b>	W301.5 x H227.5 mm (W11.87 x H8.96 in.)



# PS4600 Panel PC

## Product Options

[Configure PS4600](#)
[Find Distributor](#)

<b>Front Bezel</b>	Aluminum No Bezel (Rear Mount)
<b>Expansion Slot</b>	0 slot 1 slot = 1 PCI 1 slot = 1 PCIe 2 slots = 1 PCI + 1 PCIe 2 slots = 2 PCI
<b>CPU Type</b>	Celeron 827E Core i3 3217UE
<b>Power Supply</b>	AC AC with I/F for UPS battery unit DC DC with I/F for UPS battery unit
<b>RAM</b>	1GB 2GB 3GB (2GB+1GB) 4GB (4GB) 6GB (4GB+2GB) 8GB (4GB+4GB) 12GB (8GB+4GB) 16GB (8GB+8GB)
<b>OS</b>	None Windows Embedded Standard 2009 Windows XP Pro Japanese Windows XP Pro MUI Windows Embedded Standard 7 (32bit) Windows 7 Ultimate (32bit) Windows 7 Ultimate (64bit)
<b>Storage Device</b>	None CFast 4GB CFast 8GB CFast 16GB CFast 4GB + CFast 4GB CFast 8GB + CFast 4GB SSD 60GB SSD 80GB SHD 500GB
<b>Slide-in Slot</b>	None DVD multi drive SSD 60GB SSD 80GB SHD 500GB
<b>Options</b>	None COM Expansion Board RS-232C/422/485 COM Expansion Board RS-232C/422/485 + COM Expansion Board RS-232C/422/485

## PS4700 Panel PC

The PS4700 features an Atom™ N270 processor, creating a powerful system for any production floor. Its aluminum housing adds to the PC's durability, while its multiple I/O ports lend to its flexibility. These units provide more robust storage options, along with quick and easy storage expansion. The bright and crisp TFT color display is also complemented with different screen size options. There are also stainless steel options which supports ATEX.



### General Specifications

<b>Models</b>	PS4700 (Build to Order)
<b>Operating System</b>	Windows® XP Professional SP3, Windows® 7 Ultimate, Windows® Embedded Standard 2009, Windows® Embedded Standard 7
<b>Display Type and Size</b>	TFT Color LCD 15"
<b>Graphic Display Resolution</b>	1,024 x 768 pixels (XGA)
<b>Touch Panel Type</b>	Analog resistive film
<b>Serial Port (COM)</b>	RS-232C x2
<b>Ethernet Interface</b>	x2
<b>USB</b>	TypeA (USB2.0) x5
<b>Backlight</b>	LED
<b>Storage Temperature</b>	-20 to 60 °C (-4 to 140 °F)
<b>Ambient Operatng Temp</b>	0 to 50 °C (32 to 122 °F)
<b>Environmental Ratings</b>	IEC60529 IP65, UL50E Type 4X
<b>Rated Input Voltage</b>	24Vdc or 100 to 240 Vac
<b>Power Consumption</b>	Core™2 Duo: 100 W / Atom™: 70 W
<b>External Dimensions</b>	W383.5 x H282.5 x D1.6 mm (W15.09 x H11.12 x D.06 in.)
<b>Panel Cutout Dimentions</b>	W459.5 x H359.5 mm (W18.09 x H14.15 in.)



# PS4700 Panel PC

## Product Options

[Configure PS4700](#)
[Find Distributor](#)

<b>Front Bezel Material</b>	Aluminum Stainless Steel
<b>Expansion Slot</b>	0 slot 1 slot = 1 PCI 2 slots = 1 PCI + 1 PCIe(x4) 2 slots = 2 PCI
<b>CPU Type</b>	Atom N270 Core 2 Duo P8400
<b>Power Supply</b>	AC DC DC with I/F for UPS battery unit DC with Noise Filter for Marine Certification DC with I/F for UPS battery unit and Noise Filter for Marine Certification
<b>RAM</b>	1GB 2GB 3GB (2GB+1GB) 4GB (2GB+2GB) 6GB (4GB+2GB) 8GB (4GB+4GB)
<b>Operating System</b>	None Windows Embedded Standard 2009 Windows XP Pro Japanese Windows XP Pro MUI Windows Embedded Standard 7(32bit) Windows 7 Ultimate (32bit) Windows 7 Ultimate (64bit)
<b>Storage Device</b>	None CFast 4GB CFast 8GB SSD 80GB SSD 32GB SHD 250GB
<b>Slide-in Slot</b>	None DVD multi drive SSD 32GB SSD 80GB SHD 250GB
<b>Options</b>	None COM Expansion Board RS-232C/422/485



## PS4700 (Z510) Panel PC

The PS4700 Z510 features a Atom™ Z510 processor, creating a powerful system for any production floor. Its aluminum housing adds to the PC's durability, while its multiple I/O ports lend to its flexibility. Customers have a choice of an aluminum, or stainless steel bezel to accommodate different environments. This unit also has low power consumption, along with being a diskless and fanless PC. There are also stainless steel options, which support ATEX.


**3D  
CAD**

### General Specifications

<b>Models</b>	PS4700 (Embedded Model) (Build to Order)
<b>Operating System</b>	Windows® Embedded Standard 2009
<b>Display Type and Size</b>	TFT Color LCD 15"
<b>Graphic Display Resolution</b>	1,024 x 768 pixels (XGA)
<b>Touch Panel Type</b>	Analog resistive film
<b>Serial Port (COM)</b>	RS-232C x1
<b>Ethernet Interface</b>	x1
<b>USB</b>	TypeA (USB2.0) x3
<b>Backlight</b>	LED
<b>Storage Temperature</b>	-20 to 60 °C (-4 to 140 °F)
<b>Ambient Operatng Temp</b>	0 to 50 °C (32 to 122 °F)
<b>Environmental Ratings</b>	IEC60529 IP65, UL50E Type 4X
<b>Rated Input Voltage</b>	24 Vdc
<b>Power Consumption</b>	31 W
<b>External Dimensions</b>	W402 x H301 x D74.7 mm (W15.82 x H11.85 x D2.94 in.)
<b>Panel Cutout Dimentions</b>	W383.5 x H282.5 mm (W15.10 x H11.12 in.)



# PS4700 (Z510) Panel PC

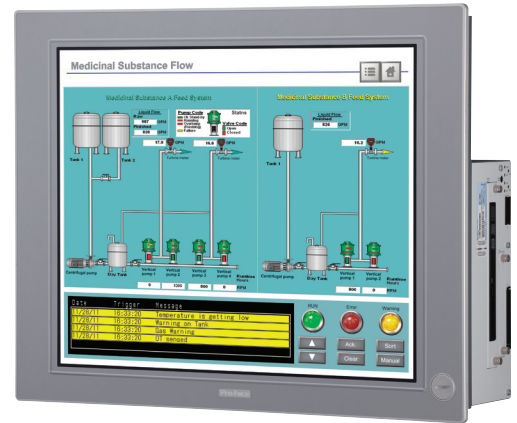
## Product Options

<b>Front Bezel Material</b>	Aluminum
	Stainless Steel
<b>Expansion Slot</b>	0 slot (Fixed)
<b>CPU Type</b>	Atom Z510 (Fixed)
<b>Power Supply</b>	DC
	DC with Noise filter for Marine Certification
<b>RAM</b>	1GB
	2GB
<b>Operating System</b>	Windows Embedded Standard 2009
<b>Storage Device</b>	None
	CF 4GB
<b>Slide-in Slot</b>	0 slot (Fixed)
<b>Options</b>	None
	Ethernet Expansion Board

[Configure PS4700 \(Z510\)](#)[Find Distributor](#)

# PS4800 Panel PC

The PS4800 features a Core™2 Duo P8400 processor, creating a powerful system for any production floor. Its aluminum housing adds to the PC's durability, while its multiple I/O ports lend to its flexibility. These units provide more robust storage options, along with quick and easy storage expansion. The bright and crisp TFT color display is also complemented with different screen size options.



3D  
CAD

## General Specifications

<b>Models</b>	PS4800 (Build to Order)
<b>Operating System</b>	Windows® XP Professional SP3, Windows® 7 Ultimate, Windows® Embedded Standard 2009, Windows® Embedded Standard 7
<b>Display Type and Size</b>	TFT Color LCD 19.1"
<b>Graphic Display Resolution</b>	1,280 x 1,024 pixels (SXGA)
<b>Touch Panel Type</b>	Analog resistive film
<b>Serial Port (COM)</b>	RS-232C x2
<b>Ethernet Interface</b>	x2
<b>USB</b>	TypeA (USB2.0) x5
<b>Backlight</b>	LED
<b>Storage Temperature</b>	-20 to 60 °C (-4 to 140 °F)
<b>Ambient Operatng Temp</b>	0 to 50 °C (32 to 122 °F)
<b>Environmental Ratings</b>	IEC60529 IP65, UL50E Type 4X
<b>Rated Input Voltage</b>	24Vdc or 100 to 240 Vac
<b>Power Consumption</b>	130 W (max.)
<b>External Dimensions</b>	Core™2 Duo: W480 x H380 x D175.2 mm (W18.90 x H14.96 x D6.893 in.) Atom™: W480 x H380 x D160 mm (W18.90 x H14.96 x D6.293 in.)
<b>Panel Cutout Dimentions</b>	W459.5 x H359.5 mm (W18.09 x H14.15 in.)



# PS4800 Panel PC

## Product Options

[Configure PS4800](#)
[Find Distributor](#)

<b>Expansion Slot</b>	0 slot 1 slot = 1 PCI 2 slots = 1 PCI + 1 PCIe(x4) 2 slots = 2 PCI
<b>CPU Type</b>	Atom N270 Core 2 Duo P8400
<b>Power Supply</b>	AC DC DC with I/F for UPS battery unit DC with Noise Filter for Marine Certification DC with I/F for UPS battery unit and Noise Filter for Marine Certification
<b>RAM</b>	1GB 2GB 3GB (2GB+1GB) 4GB (2GB+2GB) 6GB (4GB+2GB) 8GB (4GB+4GB)
<b>Operating System</b>	None Windows Embedded Standard 2009 Windows XP Pro Japanese Windows XP Pro MUI Windows Embedded Standard 7(32bit) Windows 7 Ultimate (32bit) Windows 7 Ultimate (64bit)
<b>Storage Device</b>	None CFast 4GB CFast 8GB SSD 80GB SSD 32GB SHD 250GB
<b>Slide-in Slot</b>	None DVD multi drive SSD 32GB SSD 80GB SHD 250GB
<b>Options</b>	None COM Expansion Board RS-232C/422/485

## FP5000 – Flat Panel Display



### Description

Sharing the panel cut out dimension with the FP3000 Series, the FP5000 Series is the natural choice for upgrading your system. Automatic resolution and brightness adjustment eases upgrade and increase operation efficiency.

The FP5000 Series employs an analog resistive multi-touch touch panel that allows multi touch gestures even when wearing work gloves. Gesture operation greatly prevents unintended operation and the multi-touch panel film prevents display glass fragments from contaminating the processed goods, essential in the food and beverage industry.

In addition to cutting-edge functions such as gesture operation and a brightness sensor, the FP5000 Series provides a high level of environmental resistance with features like a maximum ambient operating temperature rating of 60°C and an IP67F protection rating that allows it to withstand washing with a high-pressure cleaner during hygienic maintenance of equipment.

### Features

- Automatic resolution adjustment
- Supports operating systems from Windows XP to Windows 8.1
- 12Vdc battery operated devices and equipment
- Straight forward connectivity
- Front USB port for easy data export

Simple configuration of display and PC

- Easy installation with integrated mounting bracket and anti-drop lock

# FP5000 – Flat Panel Display

Touch Screen DVI I/F Compatible  
Industrial Flat Panel Monitors

## General Specifications

<b>Backlight</b>	White LED
<b>Storage Temperature</b>	-20 to 60 °C (-4 to 140 °F)
<b>Ambient Operating Temp</b>	0 to 60 °C (32 to 140 °F)
<b>Environmental Ratings</b>	w/ factory-installed front USB cover: IP65F, IP67F, TYPE 1, w/ front USB cover as an option: IP66F, IP67F TYPE 1, TYPE 4X/13
<b>Certifications</b>	CE, UL Listed, RoHS



## Product Specifications

Part Number to Order	PFXFP5600TPD	PFXFP5700TPD
<b>Display Type and Size</b>	12.1" TFT Color LCD	15" TFT Color LCD
<b>Display Colors</b>	16 million colors	16 million colors
<b>Graphic Display Resolution</b>	1,024 x 768 pixels (XGA)	1,024 x 768 pixels (XGA)
<b>Display Area</b>	W245.76 x H184.32 mm (W9.68 x H7.26 in.)	W304.1 x H228.1 mm (W11.97 x H8.98 in.)
<b>Touch Panel Type</b>	Resistive film (analog, multi-touch)	Resistive film (analog, multi-touch)
<b>Brightness Controls</b>	0 to 100	0 to 100
<b>USB (1)</b>	USB2.0 (TYPE-B)	USB2.0 (TYPE-B)
<b>USB (2)</b>	USB2.0 (TYPE-A)	USB2.0 (TYPE-A)
<b>Video Input Interface</b>	DVI-D 24 pin (socket)	DVI-D 24 pin (socket)
<b>Rated Input Voltage</b>	12 to 24Vdc	12 to 24Vdc
<b>Power Consumption</b>	17 W (max.)	21 W (max.)
<b>Panel Cutout Dimensions</b>	W301.5 x H227.5 mm (W11.87 x H8.96 in.)	W383.5 x H282.5 mm (W15.1 x H11.12 in.)
<b>External Dimensions</b>	W315 x H241 x D67 mm (W12.4 x H9.49 x D2.64 in.)	W397 x H296 x D67 mm (W15.6 x H11.7 x D2.64 in.)