

# GP4000 Standard



## Description

Best in Class Connectivity, Powerful HMI Functionality and Full Compatibility with legacy Pro-face GP-Pro EX and GP3000 products. GP4000 HMI drivers allow you to “talk to” your preferred PLC, vision system, motion controller, temperature controller, inverter, bar code reader, and actuator.

**Easy to Use:** Operators can easily monitor conditions and the operating environment in real time using realistic 3D buttons, lamps, and gauges.

**Saves Energy:** Reduces on-site power consumption in a variety of ways including an on-board LED backlight in all models, and a dimmer setting used to decrease and eventually stand-by the display after being idle for a set period of time.

**Quick On-site Recovery:** Simply touch the alarm message to check the relevant data in chronological sequence.

**Remote Monitoring:** GP-Viewer EX software provides various remote monitoring functions, such as checking the screen of the GP located on a production site from a remote office.

## Features

- 65,536 Colors, Clear, Bright, High-Resolution TFT Display
- Energy Efficient LED Display
- No Grid Analog Touch Panel for Improved Visibility and Precise Part Placement
- Supports Up to Two Protocol Drivers Simultaneously
- High Speed Application Transfer, 10 Times Faster than Conventional Operator Interfaces
- 10/100 Base-T Ethernet, USB, and Serial Communication Interfaces
- High-Definition Part Images and Multi-Language Support
- Custom Overlays available
- Remote HMI compatibility (tablet/phone)

## 3.5" Standard – GP4000

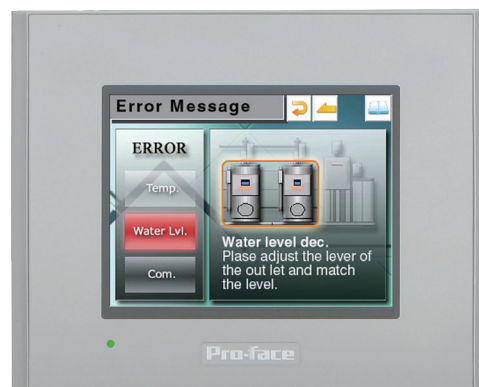
Analog Touchscreen Operator Interface  
with USB and Serial Communication Ports

### General Specifications

<b>Graphic Display Resolution</b>	320 x 240 pixels (QVGA)
<b>Display Type and Size</b>	TFT Color LCD (3.5")
<b>Display Colors</b>	65,536 Colors (no blink) / 16,384 Colors (blink)
<b>Display Area</b>	W 70.56 x H 52.92 mm [W 2.78 x H 2.08 in]
<b>Touch Screen</b>	Resistive Film (analog)
<b>Backlight</b>	White LED
<b>Storage Temperature</b>	-20 to 60° C [-4 to 140° F]
<b>Environmental Ratings</b>	IP65f, NEMA #250 Type 4x/13
<b>Certifications</b>	CCE, CSA, UL Listed C1D2, RoHS, ABS, DNV, ATEX

3D  
CAD

360



### Product Specifications

Part Number to Order	PFXGP4201TADW	PFXGP4201TAD	PFXGP4203TAD
<b>SD Card</b>	No	No	No
<b>Serial Ports (COM1)</b>	RS-232C	RS-232C / 422 / 485	RS-485 (isolation)
<b>Serial Ports (COM2)</b>	RS-422/485	n/a	n/a
<b>Ethernet</b>	n/a	x1	x1
<b>USB (1)</b>	Type-A (2.0)	Type-A (2.0)	Type-A (2.0)
<b>USB (2)</b>	Mini-B (2.0)	Mini-B (2.0)	Mini-B (2.0)
<b>Brightness / Contrast</b>	8 levels of adjustment	16 levels of adjustment	16 levels of adjustment
<b>Programming Memory</b>	8mb Flash EPROM	16mb Flash EPROM	16mb Flash EPROM
<b>Backup Memory</b>	128kb SRAM w/ battery backup	320kb SRAM w/ battery backup	320kb SRAM w/ battery backup
<b>Ambient Operating Temp</b>	0 to 50° C [ 32 to 122° F ]	0 to 50° C [ 32 to 122° F ]	0 to 50° C [ 32 to 122° F ]
<b>Input Voltage</b>	24 VDC	24 VDC	24 VDC
<b>Power Consumption</b>	9.6 W or less	9.6 W or less	9.6 W or less

## 5.7" Standard – GP4000

Analog Touchscreen Operator Interface  
with USB and Serial Communication Ports

### General Specifications

<b>Graphic Display Resolution</b>	320 x 240 pixels (QVGA)
<b>Display Type and Size</b>	TFT Color LCD (5.7")
<b>Display Colors</b>	65,536 Colors (no blink) / 16, 384 Colors (blink)
<b>Display Area</b>	W 115.2 x H 86.4 mm [W 4.54 x H 3.4 in]
<b>Touch Screen</b>	Resistive Film (analog)
<b>Backlight</b>	White LED
<b>Storage Temperature</b>	-20 to 60° C [-4 to 140° F]
<b>Environmental Ratings</b>	IP65f, NEMA #250 Type 4x/13
<b>Certifications</b>	CE, CSA, UL Listed C1D2, RoHS, ABS, DNV, ATEX

3D  
CAD

360



### Product Specifications

Part Number to Order	PFXGP4301TADW PFXGP4301TADWC*	PFXGP4301TAD PFXGP4301TADC*	PFXGP4303TAD
<b>SD Card</b>	No	x1	x1
<b>Serial Ports (COM1)</b>	RS-232C	RS-232C	RS-232C
<b>Serial Ports (COM2)</b>	RS-422 / 485	RS-422 / 485	RS-485 (isolation)
<b>Ethernet</b>	x1	x1	x1
<b>USB (1)</b>	Type-A (2.0)	Type-A (2.0)	Type-A (2.0)
<b>USB (2)</b>	Mini-B (2.0)	Mini-B (2.0)	Mini-B (2.0)
<b>Brightness / Contrast</b>	8 levels of adjustment	16 levels of adjustment	16 levels of adjustment
<b>Programming Memory</b>	8mb Flash EPROM	16mb Flash EPROM	16mb Flash EPROM
<b>Backup Memory</b>	128kb SRAM w/ battery backup	320kb SRAM w/ battery backup	320kb SRAM w/ battery backup
<b>Ambient Operating Temp</b>	0-50° C [ 32 to 122° F ]	0-55° C [ 32 to 131° F ]	0-55° C [ 32 to 131° F ]
<b>Input Voltage</b>	24 VDC	24 VDC	24 VDC
<b>Power Consumption</b>	10.5 W or less	10.5 W or less	10.5 W or less

\* C suffix denotes product is conformal coated

# 7.0" Standard (wide) – GP4000

Analog Touchscreen Operator Interface  
with USB and Serial Communication Ports

## General Specifications

<b>Graphic Display Resolution</b>	800 x 480 pixels (WVGA)
<b>Display Type and Size</b>	TFT Color LCD (7.0" Widescreen)
<b>Display Colors</b>	65,536 Colors (no blink) / 16, 384 Colors (blink)
<b>Display Area</b>	W 152.4 x H 91.44 mm [W 6.0 x H 3.6 in]
<b>Touchscreen</b>	Resistive Film (analog)
<b>Backlight</b>	White LED
<b>Storage Temperature</b>	-20 to 60° C [-4 to 140° F]
<b>Environmental Ratings</b>	IP65f, NEMA #250 Type 4x/13
<b>Certifications</b>	CE, CSA, UL Listed C1D2, RoHS, ABS, DNV, ATEX



3D  
CAD

360



## Product Specifications

<b>Part Number to Order</b>	<b>PFXGP4401WADW</b>
<b>SD Card</b>	x1
<b>Serial Ports (COM1)</b>	RS-232C
<b>Serial Ports (COM2)</b>	RS-422 / 485
<b>Ethernet</b>	x1
<b>USB (1)</b>	Type-A (2.0)
<b>USB (2)</b>	Mini-B (2.0)
<b>Brightness / Contrast</b>	8 levels of adjustment
<b>Programming Memory</b>	16mb Flash EPROM
<b>Backup Memory</b>	128kb SRAM with battery backup
<b>Ambient Operating Temp</b>	0-50° C [ 32 to 122° F ]
<b>Input Voltage</b>	24 VDC
<b>Power Consumption</b>	12W or less



## 7.5" Standard – GP4000

Analog Touchscreen Operator Interface  
with USB and Serial Communication Ports

### General Specifications

<b>Graphic Display Resolution</b>	640 x 480 pixels (VGA)
<b>Display Type and Size</b>	TFT Color LCD (7.5")
<b>Display Colors</b>	65,536 Colors (no blink) / 16, 384 Colors (blink)
<b>Display Area</b>	W 153.7 x H 115.8 mm [W 6.05 x H 4.56 in]
<b>Touchscreen</b>	Resistive Film (analog)
<b>Backlight</b>	White LED
<b>Storage Temperature</b>	-20 to 60° C [-4 to 140° F]
<b>Environmental Ratings</b>	IP65f, NEMA Type 4x/13
<b>Certifications</b>	CE, CSA, UL Listed C1D2, RoHS, ABS, DNV, ATEX



3D  
CAD

360



### Product Specifications

<b>Part Number to Order</b>	<b>PFXGP4401TAD</b>
<b>SD Card</b>	x1
<b>Serial Ports (COM1)</b>	RS-232C
<b>Serial Ports (COM2)</b>	RS-422 / 485
<b>Ethernet</b>	x1
<b>USB (1)</b>	Type-A (2.0)
<b>USB (2)</b>	Mini-B (2.0)
<b>Brightness / Contrast</b>	16 levels of adjustment
<b>Programming Memory</b>	32mb Flash EPROM
<b>Backup Memory</b>	320kb SRAM with battery backup
<b>Ambient Operating Temp</b>	0-55° C [ 32 to 131° F ]
<b>Input Voltage</b>	24 VDC
<b>Power Consumption</b>	12W or less

# 10.4" Standard – GP4000

Analog Touchscreen Operator Interface  
with USB and Serial Communication Ports

## General Specifications

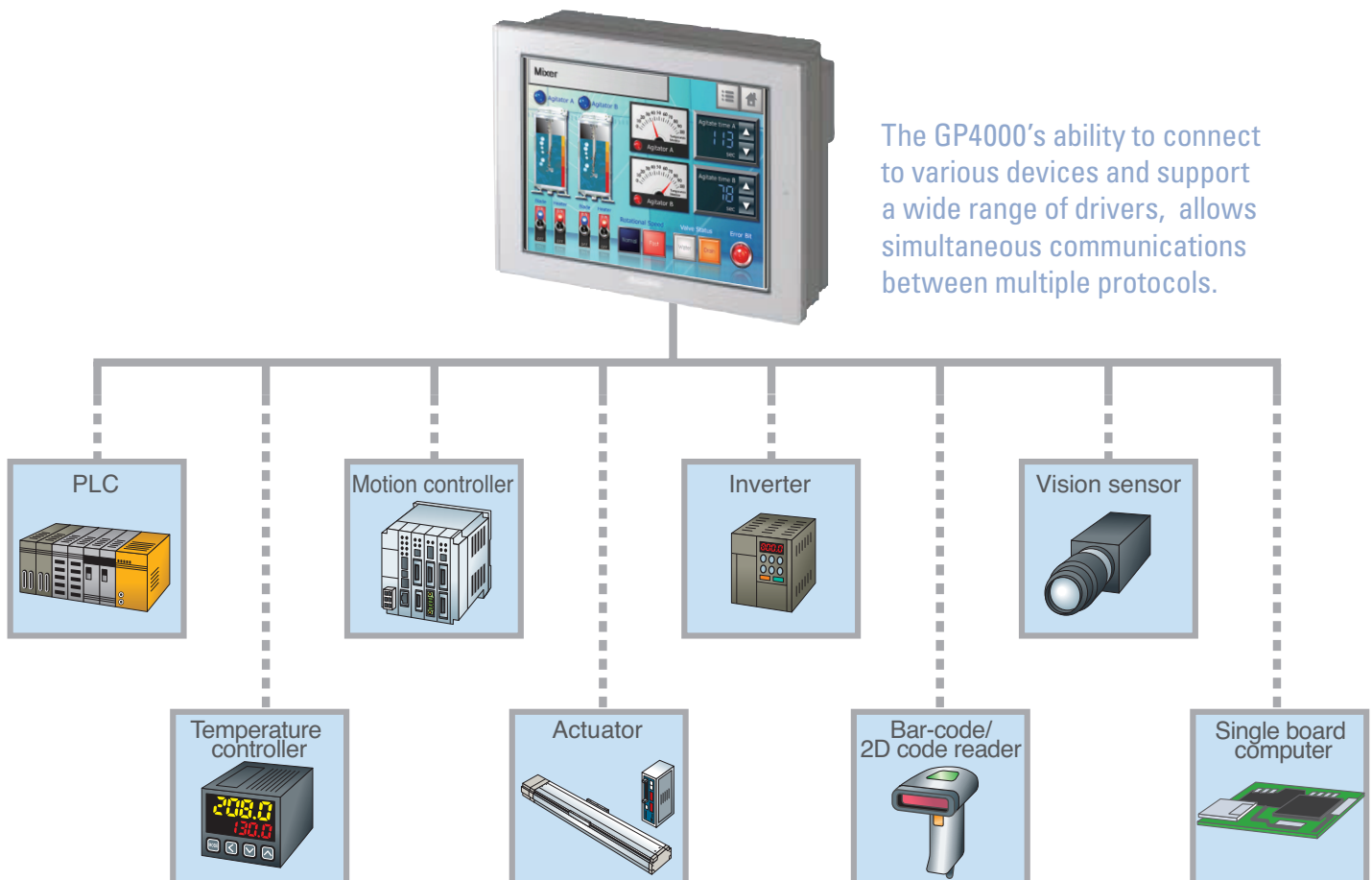
<b>Graphic Display Resolution</b>	640 x 480 pixels (VGA)
<b>Display Type and Size</b>	TFT Color LCD (10.4")
<b>Display Colors</b>	65,536 Colors (No blink) / 16,384 Colors (blink)
<b>Display Area</b>	W 211.2 x H 158.4 mm [W 8.31 x H 6.24 in]
<b>Backlight</b>	White LED
<b>Storage Temperature</b>	-20 to 60° C [-4 to 140°F]
<b>Environmental Ratings</b>	IP65f, NEMA #250 Type 4x/13
<b>Certifications</b>	CE, CSA, UL Listed C1D2, RoHS, ABS, DNV, ATEX

3D  
CAD

360



The GP4000's ability to connect to various devices and support a wide range of drivers, allows simultaneous communications between multiple protocols.



# 10.4" Standard – GP4000

Analog Touchscreen Operator Interface  
with USB and Serial Communication Ports

## Product Specifications

Part Number to Order	PFXGP4501TAA PFXGP4501TAAC*	PFXGP4501TAD PFXGP4501TADC*	PFXGP4501TMD
SD Card	x1	x1	x1
Serial Ports (COM1)	RS-232C	RS-232C	RS-232C
Serial Ports (COM2)	RS-422 / 485	RS-422 / 485	RS-422 / 485
Ethernet	x1	x1	x1
USB (1)	Type-A (2.0)	Type-A (2.0)	Type-A (2.0)
USB (2)	Mini-B (2.0)	Mini-B (2.0)	Mini-B (2.0)
Touch Screen	Resistive Film (analog)	Resistive Film (analog)	Resistive Film (matrix)
Brightness / Contrast	16 levels of adjustment	16 levels of adjustment	16 levels of adjustment
Programming Memory	32mb Flash EPROM	32mb Flash EPROM	32mb Flash EPROM
Backup Memory	320kb SRAM w/ battery backup	320kb SRAM w/ battery backup	320kb SRAM w/ battery backup
Input Voltage	100-240 VAC	24 VDC	24 VDC
Ambient Operating Temp	0-55° C [ 32 to 131° F ]	0-55° C [ 32 to 131° F ]	0-55° C [ 32 to 131° F ]
Power Consumption	100 Vac: <44VA 240 Vac: <58VA	17W or less	17W or less

\* C suffix denotes product is conformal coated

Part Number to Order	PFXGP4501TMA	PFXGP4501TADW	PFXGP4503TAD
SD Card	x1	x1	x1
Serial Ports (COM1)	RS-232C	RS-232C	RS-232C
Serial Ports (COM2)	RS-422 / 485	RS-422 / 485	RS-422 / 485 (isolation)
Ethernet	x1	x1	x1
USB (1)	Type-A (2.0)	Type-A (2.0)	Type-A (2.0)
USB (2)	Mini-B (2.0)	Mini-B (2.0)	Mini-B (2.0)
Touch Screen	Resistive Film (matrix)	Resistive Film (matrix)	Resistive Film (analog)
Brightness / Contrast Controls	16 levels of adjustment	8 levels of adjustment	16 levels of adjustment
Programming Memory	32mb Flash EPROM	16mb Flash EPROM	32mb Flash EPROM
Backup Memory	320kb SRAM w/ battery backup	128kb SRAM w/ battery backup	320kb SRAM w/ battery backup
Input Voltage	100-240 VAC	24 VDC	24 VDC
Ambient Operating Temperature	0-55° C [ 32 to 131° F ]	0-50° C [ 32 to 122° F ]	0-55° C [ 32 to 131° F ]
Power Consumption	100 Vac: <44VA 240 Vac: <58VA	17W or less	17W or less

# 12.1" Standard – GP4000

Analog Touchscreen Operator Interface  
with USB and Serial Communication Ports

## General Specifications

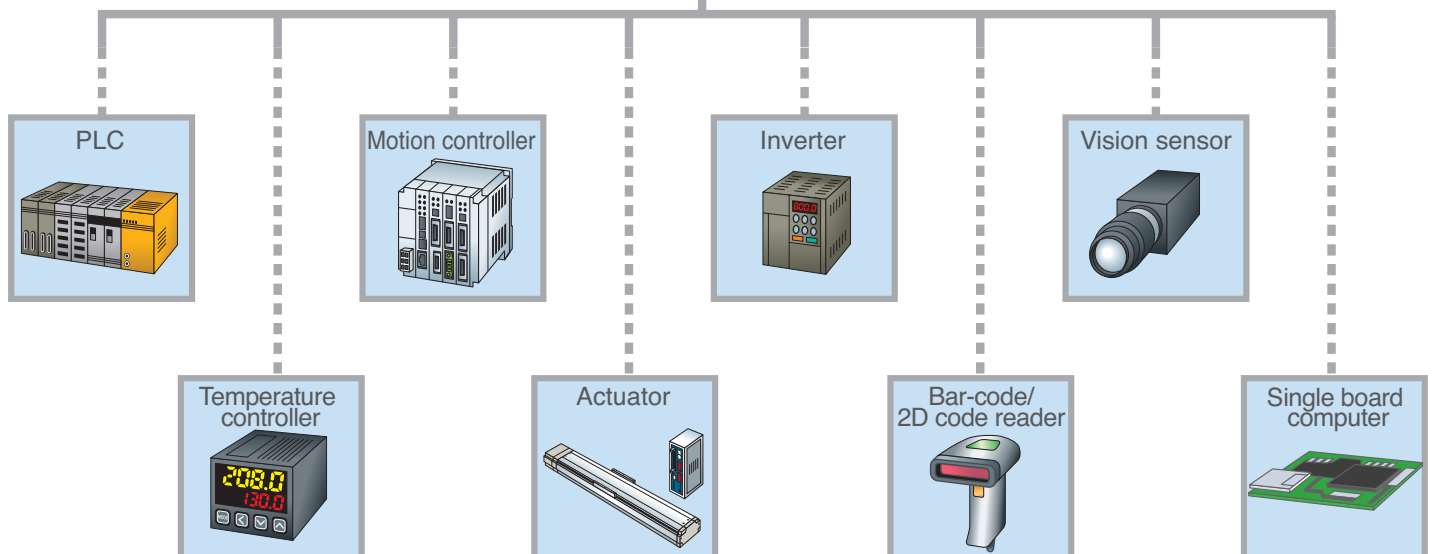
<b>Graphic Display Resolution</b>	800 x 600 pixels (SVGA)
<b>Display Type and Size</b>	TFT Color LCD (12.1")
<b>Display Colors</b>	65,536 Colors (no blink) / 16, 384 Colors (blink)
<b>Display Area</b>	W 246.0 x H 184.5 mm [W 9.69 x H 7.26 in]
<b>Backlight</b>	White LED
<b>Storage Temperature</b>	-20 to 60° C [-4 to 140° F]
<b>Environmental Ratings</b>	IP65f, NEMA #250 Type 4x/13
<b>Certifications</b>	CE, CSA, UL Listed C1D2, RoHS, ABS, DNV, ATEX

3D  
CAD

360



The GP4000's ability to connect to various devices and support a wide range of drivers, allows simultaneous communications between multiple protocols.



# 12.1" Standard – GP4000

Analog Touchscreen Operator Interface  
with USB and Serial Communication Ports

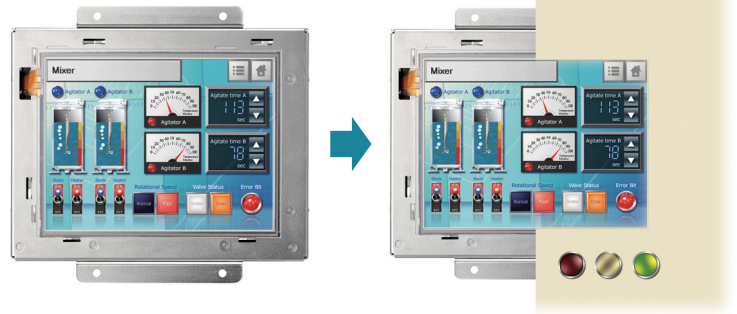
## Product Specifications

Part Number to Order	PFXGP4601TAA PFXGP4601TAAC*	PFXGP4601TAD PFXGP4601TADC*	PFXGP4603TAD
SD Card	x1	x1	x1
Serial Ports (COM1)	RS-232C	RS-232C	RS-232C
Serial Ports (COM2)	RS-422 / 485	RS-422 / 485	RS-485 (isolation)
Ethernet	x1	x1	x1
USB (1)	Type-A (2.0)	Type-A (2.0)	Type-A (2.0)
USB (2)	Mini-B (2.0)	Mini-B (2.0)	Mini-B (2.0)
Touch Screen	Resistive Film (analog)	Resistive Film (analog)	Resistive Film (analog)
Brightness / Contrast	16 levels of adjustment	16 levels of adjustment	16 levels of adjustment
Programming Memory	32mb Flash EPROM	32mb Flash EPROM	32mb Flash EPROM
Backup Memory	320kb SRAM w/ battery backup	320kb SRAM w/ battery backup	320kb SRAM w/ battery backup
Input Voltage	100-240 VAC	24 VDC	24 VDC
Ambient Operating Temp	0-55° C [ 32 to 131° F ]	0-55° C [ 32 to 131° F ]	0-55° C [ 32 to 131° F ]
Power Consumption	100 Vac: <44VA    240 Vac: <58VA	17W or less	17W or less

\* C suffix denotes product is conformal coated

Part Number to Order	PFXGP4601TMD	PFXGP4601TMA
SD Card	x1	x1
Serial Ports (COM1)	RS-232C	RS-232C
Serial Ports (COM2)	RS-422 / 485	RS-422 / 485
Ethernet	x1	x1
USB (1)	Type-A (2.0)	Type-A (2.0)
USB (2)	Mini-B (2.0)	Mini-B (2.0)
Touch Screen	Resistive Film (matrix)	Resistive Film (matrix)
Brightness / Contrast	16 levels of adjustment	16 levels of adjustment
Programming Memory	32mb Flash EPROM	32mb Flash EPROM
Backup Memory	320kb SRAM with battery backup	320kb SRAM with battery backup
Ambient Operating Temp	0-55° C [ 32 to 131° F ]	0-55° C [ 32 to 131° F ]
Input Voltage	24 VDC	100-240 VAC
Power Consumption	17W or less	100 Vac: <44VA    240 Vac: <58VA

## GP4000 Rear Mount



### Description

The GP4000 Series Rear-Mount model is an HMI that can be mounted from the rear of an equipment control panel. Conventional programmable displays are typically designed to be mounted from the front, and have a bezel that projects past the front of the equipment control panel.

By offering a rear-mount model that can be mounted from the rear of an equipment control panel to meet the increasing need for design-conscious equipment in the industrial world, Pro-face is now able to provide a mounting method that matches industry needs in terms of equipment appearance and overall control panel design.

Using a rear-mount model also makes it possible to keep the control panel and display area flat. This has the benefit of preventing the accumulation of dust and mold, and even allows the display to be used in medical equipment and other devices used in environments where hygiene is important.

### Features

- Equipment control panel and display area can be kept flat
- Available in four sizes: 12.1", 10.4", 7.5", and 5.7"
- Compliant with a variety of international standards
- Supports GP-Pro EX, screen editing and logic program software for the existing GP4000 series



## 5.7" Rear Mount – GP4000

Analog Touchscreen Operator Interface  
with Multiple Rear Mounting Options

### General Specifications

<b>Graphic Display Resolution</b>	320 x 240 pixels (QVGA)
<b>Display Type and Size</b>	TFT Color LCD (5.7")
<b>Display Colors</b>	65,536 Colors (no blink) / 16,384 Colors (blink)
<b>Display Area</b>	W 115.2 x H 86.4 mm (W 4.54 x H 3.4 in)
<b>Touch Screen</b>	Resistive Film (analog)
<b>Backlight</b>	White LED
<b>Storage Temperature</b>	-20 to 60° C [-4 to 140° F]
<b>Environmental Ratings</b>	IP20
<b>Certifications</b>	CE, CSA, UL Listed C1D2, RoHS, ABS, DNV, ATEX



### Product Specifications

Part Number to Order	PFXGP4301TADR	PFXGP4301TADRF0C*
<b>SD Card</b>	x1	x1
<b>Serial Ports (COM1)</b>	RS-232C	RS-232C
<b>Serial Ports (COM2)</b>	RS-422/485	RS-422/485
<b>Ethernet</b>	x1	x1
<b>USB (1)</b>	Type-A (2.0)	Type-A (2.0)
<b>USB (2)</b>	Mini-B (2.0)	Mini-B (2.0)
<b>Brightness / Contrast</b>	16 levels of adjustment	16 levels of adjustment
<b>Programming Memory</b>	16mb Flash EPROM	16mb Flash EPROM
<b>Backup Memory</b>	320kb SRAM w/ battery backup	320kb SRAM w/ battery backup
<b>Ambient Operating Temp</b>	0 to 55° C [ 32 to 131° F ]	0 to 55° C [ 32 to 131° F ]
<b>Input Voltage</b>	24 VDC	24 VDC
<b>Power Consumption</b>	10.5 W or less	10.5 W or less

\* Product is conformal coated

# 7.5" Rear Mount – GP4000

Analog Touchscreen Operator Interface  
with Multiple Rear Mounting Options

## General Specifications

<b>Graphic Display Resolution</b>	640 x 480 pixels (VGA)
<b>Display Type and Size</b>	TFT Color LC (7.5")
<b>Display Colors</b>	65,536 Colors (no blink) / 16,384 Colors (blink)
<b>Display Area</b>	W 153.7 x H 115.8 mm [W 6.05 x H 4.56 in]
<b>Touch Screen</b>	Resistive Film (analog)
<b>Backlight</b>	White LED
<b>Storage Temperature</b>	-20 to 60° C [-4 to 140° F]
<b>Environmental Ratings</b>	IP20
<b>Certifications</b>	CE, CSA, UL Listed C1D2, RoHS, ABS, DNV, ATEX



## Product Specifications

Part Number to Order	PFXGP4401TADR	PFXGP4401TADRF0C*
<b>SD Card</b>	x1	x1
<b>Serial Ports (COM1)</b>	RS-232C	RS-232C
<b>Serial Ports (COM2)</b>	RS-422/485	RS-422/485
<b>Ethernet</b>	x1	x1
<b>USB (1)</b>	Type-A (2.0)	Type-A (2.0)
<b>USB (2)</b>	Mini-B (2.0)	Mini-B (2.0)
<b>Brightness / Contrast</b>	16 levels of adjustment	16 levels of adjustment
<b>Programming Memory</b>	32mb Flash EPROM	32mb Flash EPROM
<b>Backup Memory</b>	320kb SRAM w/ battery backup	320kb SRAM w/ battery backup
<b>Ambient Operating Temp</b>	0 to 55° C [ 32 to 131° F ]	0 to 55° C [ 32 to 131° F ]
<b>Input Voltage</b>	24 VDC	24 VDC
<b>Power Consumption</b>	12 W or less	12 W or less

\* Product is conformal coated

# 10.4" Rear Mount – GP4000

Analog Touchscreen Operator Interface  
with Multiple Rear Mounting Options

## General Specifications

<b>Graphic Display Resolution</b>	640 x 480 pixels (VCA)
<b>Display Type and Size</b>	TFT Color LC (10.4")
<b>Display Colors</b>	65,536 Colors (no blink) / 16,384 Colors (blink)
<b>Display Area</b>	W 211.2 x H 158.4 mm [W 8.31 x H 6.24 in]
<b>Touch Screen</b>	Resistive Film (analog)
<b>Backlight</b>	White LED
<b>Storage Temperature</b>	-20 to 60° C [-4 to 140° F]
<b>Environmental Ratings</b>	IP20
<b>Certifications</b>	CE, CSA, UL Listed C1D2, RoHS, ABS, DNV, ATEX



## Product Specifications

Part Number to Order	PFXGP4501TADR	PFXGP4501TADRF0C*
<b>SD Card</b>	x1	x1
<b>Serial Ports (COM1)</b>	RS-232C	RS-232C
<b>Serial Ports (COM2)</b>	RS-422/485	RS-422/485
<b>Ethernet</b>	x1	x1
<b>USB (1)</b>	Type-A (2.0)	Type-A (2.0)
<b>USB (2)</b>	Mini-B (2.0)	Mini-B (2.0)
<b>Brightness / Contrast</b>	16 levels of adjustment	16 levels of adjustment
<b>Programming Memory</b>	32mb Flash EPROM	32mb Flash EPROM
<b>Backup Memory</b>	320kb SRAM w/ battery backup	320kb SRAM w/ battery backup
<b>Ambient Operating Temp</b>	0 to 55° C [ 32 to 131° F ]	0 to 55° C [ 32 to 131° F ]
<b>Input Voltage</b>	24 VDC	24 VDC
<b>Power Consumption</b>	17 W or less	17 W or less

\* Product is conformal coated

# 12.1" Rear Mount – GP4000

Analog Touchscreen Operator Interface  
with Multiple Rear Mounting Options

## General Specifications

<b>Graphic Display Resolution</b>	800 x 600 pixels (SVGA)
<b>Display Type and Size</b>	TFT Color LC (12.1")
<b>Display Colors</b>	65,536 Colors (no blink) / 16,384 Colors (blink)
<b>Display Area</b>	W 246.0 x H 184.5 mm [W 9.69 x H 7.26 in]
<b>Touch Screen</b>	Resistive Film (analog)
<b>Backlight</b>	White LED
<b>Storage Temperature</b>	-20 to 60° C [-4 to 140° F]
<b>Environmental Ratings</b>	IP20
<b>Certifications</b>	CE, CSA, UL Listed C1D2, RoHS, ABS, DNV, ATEX



## Product Specifications

Part Number to Order	PFXGP4601TADR	PFXGP4601TADR
<b>SD Card</b>	x1	x1
<b>Serial Ports (COM1)</b>	RS-232C	RS-232C
<b>Serial Ports (COM2)</b>	RS-422/485	RS-422/485
<b>Ethernet</b>	x1	x1
<b>USB (1)</b>	Type-A (2.0)	Type-A (2.0)
<b>USB (2)</b>	Mini-B (2.0)	Mini-B (2.0)
<b>Brightness / Contrast</b>	16 levels of adjustment	16 levels of adjustment
<b>Programming Memory</b>	32mb Flash EPROM	32mb Flash EPROM
<b>Backup Memory</b>	320kb SRAM w/ battery backup	320kb SRAM w/ battery backup
<b>Ambient Operating Temp</b>	0 to 55° C [ 32 to 131° F ]	0 to 55° C [ 32 to 131° F ]
<b>Input Voltage</b>	24 VDC	24 VDC
<b>Power Consumption</b>	17 W or less	17 W or less

\* Product is conformal coated

# GP4000 Modular



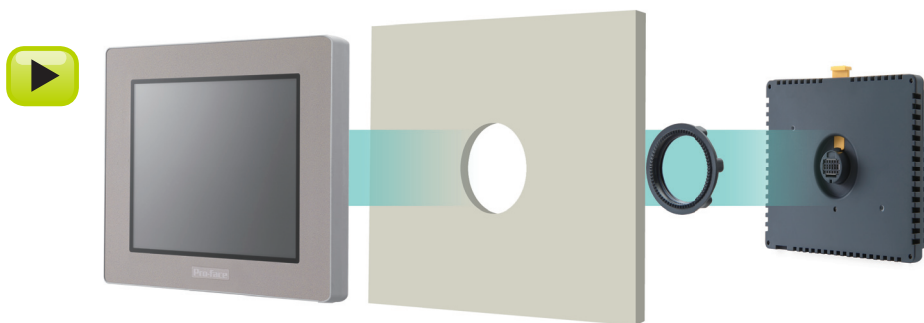
## Description

This dedicated operator interface touch screen is ideal for OEMs and high graphical detail applications. It is part of a latest line of Pro-face brand operator interfaces. The bright, crisp, and clear QVGA display of this model is complemented with a large viewing area, and no grid analog for improved visibility and precise part placement.

A host of features include Ethernet, USB, and RS232, 422, 485 serial ports. The extensive network connectivity allows support of up to two simultaneous protocols making this a highly versatile operator interface.

## Features

- 65k Color, Clear, Bright, High-Resolution TFT Display
- Energy Efficient LED Display
- No Grid Analog Touch Panel for Improved Visibility and Precise Part Placement
- Supports different types of Protocol Drivers (communicates to two selected drivers)
- Separate front & rear module for quick installation in 22mm hole
- 10/100 Base-T Ethernet, and USB



Modular Type For Easy Mounting

## 3.5" Modular – GP4000

Touchscreen Operator Interface with Separate Front and Rear Module and 22mm Mounting

### General Specifications

<b>Graphic Display Resolution</b>	320 x 240 pixels (QVGA)
<b>Display Type and Size</b>	TFT Color LCD (3.5")
<b>Display Colors</b>	65,536 Colors
<b>Display Area</b>	W 70.56 x H 52.92 mm [W 2.78 x H 2.08 in]
<b>Touch Screen</b>	Resistive Film (analog)
<b>Backlight</b>	White LED
<b>Storage Temperature</b>	-20 to 60° C [-4 to 140° F]
<b>Environmental Ratings</b>	NEMA #250 Type 4x, Display IP65f, Rear IP20
<b>Certifications</b>	CE, CSA, UL Listed C1D2, RoHS, GOST, KC, DNV



3D  
CAD

360



### Product Specifications

Part Number to Order	PFXGM4201TAD	PFXGM4B01D*
<b>SD Card</b>	No	No
<b>Serial Ports (COM1)</b>	RS-232C / 422 / 485	RS-232C / 422 / 485
<b>Serial Ports (COM2)</b>	No	No
<b>Ethernet</b>	x1	x1
<b>USB (1)</b>	Type-A (2.0)	Type-A (2.0)
<b>USB (2)</b>	Mini-B (2.0)	Mini-B (2.0)
<b>Brightness / Contrast</b>	16 levels of adjustment	n/a
<b>Programming Memory</b>	8mb Flash EPROM	8mb Flash EPROM
<b>Backup Memory</b>	128kb nvSRAM	128kb nvSRAM
<b>Ambient Operating Temp</b>	0 to 50 °C (32 to 122 °F)	0 to 50 °C (32 to 122 °F)
<b>Input Voltage</b>	24 VDC	24 VDC
<b>Power Consumption</b>	6.5 W or less	1.6 W or less

\* Rear Module only. Rear Module Installation Adapter "PFXZXMADSA1" is required for installation.



## 5.7" Modular – GP4000

Touchscreen Operator Interface with Separate Front and Rear Module and 22mm Mounting

### General Specifications

<b>Graphic Display Resolution</b>	320 x 240 pixels (QVGA)
<b>Display Type and Size</b>	TFT Color LCD (5.7")
<b>Display Colors</b>	65,536 Colors
<b>Display Area</b>	W 115.2 x H 86.4 mm [W 4.53 x H 3.4 in]
<b>Touch Screen</b>	Resistive Film (analog)
<b>Backlight</b>	White LED
<b>Storage Temperature</b>	-20 to 60° C [-4 to 140° F]
<b>Environmental Ratings</b>	NEMA #250 Type 4x, Display IP65f, Rear IP20
<b>Certifications</b>	CE, CSA, UL Listed C1D2, RoHS, GOST, KC, DNV



3D  
CAD

360



### Product Specifications

Part Number to Order	PFXGM4301TAD	PFXGM4B01D*
<b>SD Card</b>	No	No
<b>Serial Ports (COM1)</b>	RS-232C / 422 / 485	RS-232C / 422 / 485
<b>Serial Ports (COM2)</b>	No	No
<b>Ethernet</b>	Yes	x1
<b>USB (1)</b>	Type-A (2.0)	Type-A (2.0)
<b>USB (2)</b>	Mini-B (2.0)	Mini-B (2.0)
<b>Brightness / Contrast</b>	16 levels of adjustment	n/a
<b>Programming Memory</b>	8mb Flash EPROM	8mb Flash EPROM
<b>Backup Memory</b>	128kb nvSRAM	128kb nvSRAM
<b>Ambient Operating Temp</b>	0 to 50 °C (32 to 122 °F)	0 to 50 °C (32 to 122 °F)
<b>Input Voltage</b>	24 VDC	24 VDC
<b>Power Consumption</b>	6.8 W or less	1.6 W or less

\* Rear Module only. Rear Module Installation Adapter "PFXZXMADSA1" is required for installation.

# GP4100 Compact



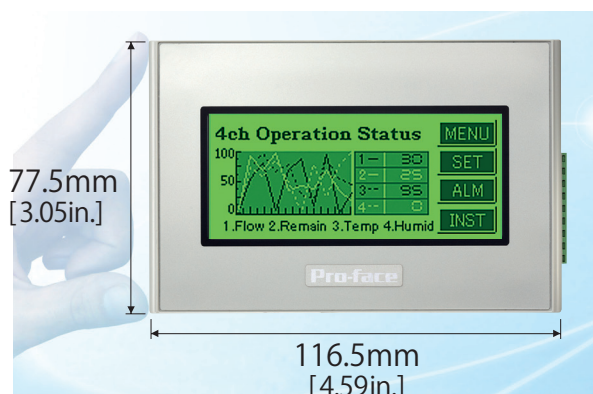
## Description

The Pro-face AGP4100 Series compact operator interface offers a crisp, clear and bright, 200 x 80 pixel monochrome LCD Display, with Analog Touch Panel for improved visibility and precise part placement. It comes equipped with energy efficient, maintenance free Green/Orange/Red or White/Pink/Red LED backlights.

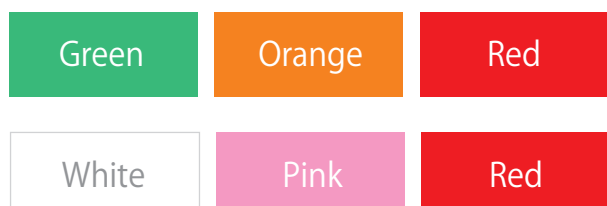
And now introducing the GP4100T operator interface with 480 x 272 pixel full color TFT display with 65,536 colors. Small, powerful, and easy to use!

## Features

- Crisp, clear and bright, 200 x 80 resolution Monochrome LCD Display or 480 x 272 Full Color Display
- No Grid Analog Touch Panel for improved visibility and precise part placement
- Touch Panel operation within a text panel replacement form factor
- Energy efficient, maintenance free LED backlight



Select between two patterns of 3-color switchable backlights



## 4.3" Compact – GP4100T

Full Color Touchscreen  
Operator Interface Interface

### General Specifications

<b>Graphic Display Resolution</b>	480 x 272 pixels
<b>Display Area</b>	W 95 x H 53.9 mm
<b>Display Type and Size</b>	TFT Color LCD (4.3")
<b>Display Colors</b>	62,536 colors
<b>Touch Screen</b>	Resistive Film (analog)
<b>Backlight</b>	White LED
<b>Brightness Adjustment</b>	16 levels of adjustment
<b>Ambient Operating Temp</b>	0 to 50° C [32 to 122° F]
<b>Storage Temperature</b>	-20 to 60° C [-4 to 140° F]
<b>Environmental Ratings</b>	IP65f, Type 1, Type 4x (indoor use only), Type 13
<b>Certifications</b>	CE, UL 61010-1, 61010-2-201



### Product Specifications

Part Number to Order	PFXGP4114T2D	PFXGP4115T2D	PFXGP4116T2D
<b>Application Memory</b>	8MB	8MB	8MB
<b>Backup Memory</b>	Flash EPROM 128 MB	Flash EPROM 128 MB	Flash EPROM 128 MB
<b>Serial Port</b>	n/a	RS-232C x1	RS-422/485 x1
<b>Ethernet</b>	RJ-45 Modular Jack x1	n/a	n/a
<b>USB Type A</b>	USB 2.0 (Type A) x1	USB 2.0 (Type A) x1	USB 2.0 (Type A) x1
<b>USB mini-B</b>	USB 2.0 (mini-B) x1	USB 2.0 (mini-B) x1	USB 2.0 (mini-B) x1
<b>Input Voltage</b>	12 to 24 Vdc	12 to 24 Vdc	12 to 24 Vdc
<b>Power Consumption</b> (supplied by USB)	3.9 W or less	3.4 W or less	3.6 W or less
<b>Power Consumption</b> (not supplied by USB)	8.1 W or less	7.5 W or less	7.7 W or less

## 3.4" Compact – GP4100

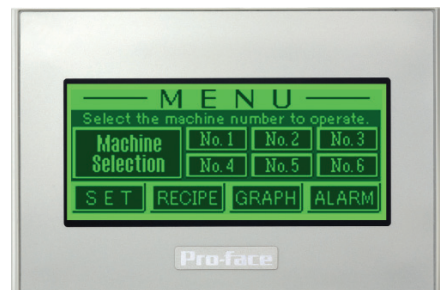
Monochrome Touchscreen  
Operator Interface Interfacer

### General Specifications

<b>Graphic Display Resolution</b>	200 x 80 pixels
<b>Display Area</b>	W 79.985 x H 31.985 mm
<b>Display Type and Size</b>	STN Monochrome LCD (3.4")
<b>Touch Screen</b>	Resistive Film (analog)
<b>Backlight</b>	LED (G1-Green/Red / W1-White/Red)
<b>Brightness Adjustment</b>	16 levels of adjustment
<b>Contrast Adjustment</b>	8 levels of adjustment
<b>Ambient Operating Temp</b>	0 to 50° C [32 to 122° F]
<b>Storage Temperature</b>	-20 to 60° C [-4 to 140° F]
<b>Environmental Ratings</b>	IP65f, NEMA #250 Type 4x/13
<b>Certifications</b>	CE, UL Listed, RoHS, CSA



3D  
CAD



### Product Specifications

Part Number to Order	AGP4104G1D AGP4104W1D	AGP4105G1D AGP4105W1D	AGP4106G1D AGP4106W1D	AGP4107G1D AGP4107W1D
<b>Display Colors</b>	G1 Models - Green/Orange/Red (16 shades) / W1 Models - White/Pink/Red (16 shades)			
<b>Serial Port (COM1)</b>	n/a	RS232C	RS422/485	RS-485 (isolated)
<b>Ethernet</b>	x1	n/a	n/a	n/a
<b>USB Ports</b>	USB 2.0 Type A	USB 2.0 Type A	USB 2.0 Type A	USB 2.0 Type A
<b>USB Ports</b>	USB 2.0 Type mini-B	USB 2.0 Type mini-B	USB 2.0 Type mini-B	USB 2.0 Type mini-B
<b>Application Memory</b>	2.2MB Flash EPROM	2.2MB Flash EPROM	2.2MB Flash EPROM	2.2MB Flash EPROM
<b>Backup Memory</b>	128kb	128kb	128kb	128kb
<b>Input Voltage</b>	24 VDC	24 VDC	24 VDC	24 VDC
<b>Power Consumption</b>	2.7W or less	2.7W or less	2.7W or less	2.7W or less

# AGP3000 Standard

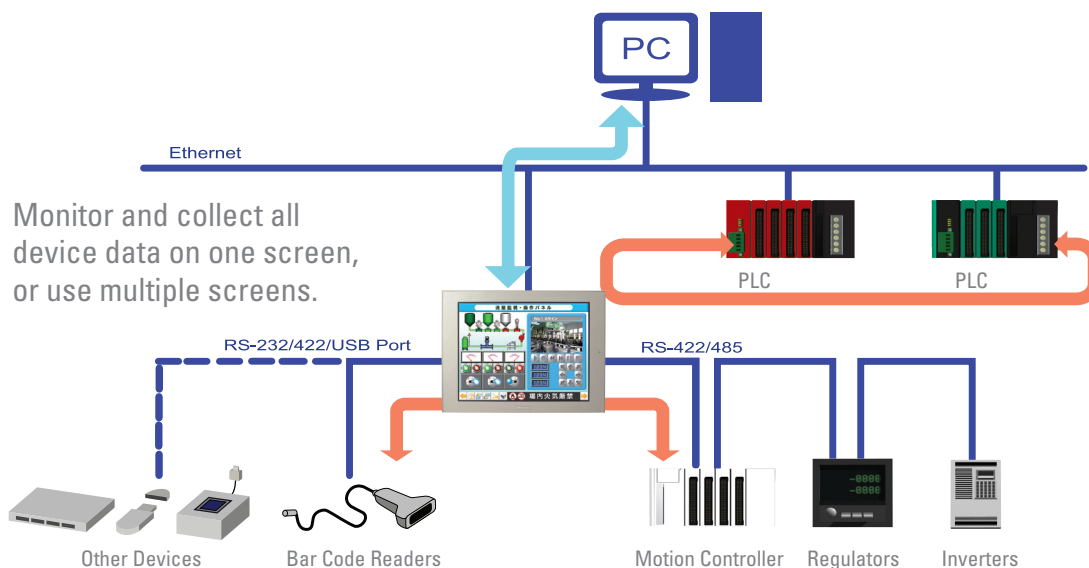


## Description

The Pro-face AGP3000 operator interface offers multiple models for flexibility, control, and connectivity. The standard product line offers extensive, built-in, time-saving features that help customers develop fast, consistent, standardized graphical interfaces. Add single platform data management and control with GP-Pro Ex or Pro-Server EX software to complete the winning combination.

## Features

- Multi-Protocol: Simultaneous communication with 3rd party equipment.
- Multi-Lingual: Operator can see screen in language of choice.
- Bar-code Reader Support: Parts tracking made simple.
- Multi-Action Switches: Execute multiple actions with "ON" switch.



## 5.7" Standard – AGP3000

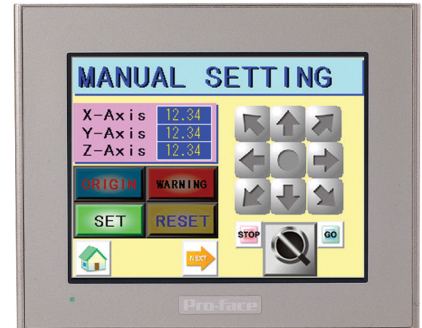
Multi-Port Touchscreen Operator Interface  
with Simultaneous Driver Support

### General Specifications

<b>Graphic Display Resolution</b>	320 x 240 pixels (QVGA)
<b>Display Type and Size</b>	TFT Color LCD (Ultra luminance - 5.7")
<b>Display Colors</b>	65,536 Colors (no blink) / 16,384 Colors (blink)
<b>Display Area</b>	W115.2 x H86.4 mm [W4.54 x H3.40 in]
<b>Touch Screen</b>	Resistive Film (analog)
<b>Backlight</b>	CCFL
<b>Storage Temperature</b>	-20 to 60° C [-4 to 140° F]
<b>Environmental Ratings</b>	IP65f, NEMA #250 Type 1
<b>Certifications</b>	CE, CSA, UL Listed C1D2, RoHS, ABS, DNV, ATEX



3D  
CAD



### Product Specifications

<b>Part Number to Order</b>	<b>AGP3300-U1-D24</b>
<b>CF Card</b>	1 slot / Type II
<b>Serial Ports (COM1)</b>	RS-232C / 422 / 485
<b>Serial Ports (COM2)</b>	RS-422 / 485
<b>Ethernet</b>	x1
<b>USB (1)</b>	Type-A (1.1)
<b>Brightness / Contrast</b>	8 levels of adjustment
<b>Programming Memory</b>	6mb Flash EPROM
<b>Backup Memory</b>	320kb SRAM
<b>Ambient Operating Temp</b>	0 to 50 °C (32 to 122 °F)
<b>Input Voltage</b>	24 VDC
<b>Power Consumption</b>	26 W or less



## AGP3000H Hand Held



### Description

The Pro-face AGP3000H hand held operator interface offers multiple models to meet the needs of your application. The standard product line offers extensive, built-in, time-saving features that help customers develop fast, consistent, standardized graphical interfaces. Add single platform data management and control with GP-Pro Ex and Pro-Server EX software to complete the winning combination.

### Features

- Tethered HMIs with full graphic touch screen
- Built-in Safety Features: Emergency Stop, 3-Position Enable Switch, and Key Switch
- Ideal for use with portable machine diagnostic or maintenance carts
- Connect directly to PLC or use easy disconnect access points



## 5.7" Hand Held – AGP3000

Touchscreen Operator Interface with  
11 Function Keys and Dual Protocol Support.

### General Specifications

<b>Touch Screen</b>	Resistive Film (analog)
<b>Backlight</b>	White LED
<b>Ambient Operating Temp</b>	0 to 40° C (32 to 104° F)
<b>Storage Temperature</b>	-20 to 60° C [-4 to 140° F]
<b>Environmental Ratings</b>	IP65
<b>Certifications</b>	CE, UL, CSA



3D  
CAD



### Product Specifications

Part Number to Order	AGP3300H-L1-D24-xxx-xxx*	AGP3300H-S1-D24-xxx-xxx*	AGP3310H-T1-D24-xxx-xxx*
<b>Display Type and Size</b>	Monochrome LCD (5.7")	STN Color LCD (5.7")	TFT Color LCD (5.7")
<b>Display Colors</b>	Monochrome (16 levels)	4,096 Colors	65,536 Colors (No blink) / 16,384 (No blink)
<b>Display Area</b>	W117.2 x H88.4 mm [W4.61 x H3.48 in]	W117.2 x H88.4 mm [W4.61 x H3.48 in]	W115.2 x H86.4 mm [W4.54 x H3.40 in]
<b>Brightness/Contrast</b>	16 levels brightness / 8 levels contrast	16 levels brightness / 8 levels contrast	16 levels brightness
<b>Graphic Display Resolution</b>	320 x 240 pixels (QVGA)	320 x 240 pixels (QVGA)	640 x 480 pixels (VGA)
<b>Function Keys</b>	11 Keys	11 Keys	11 Keys
<b>CF Card</b>	1 slot, Type II	1 slot, Type II	1 slot, Type II
<b>Serial Ports (COM1)</b>	RS-232C / 422 / 485	RS-232C / 422 / 485	RS-232C / 422 / 485
<b>Ethernet</b>	x1	x1	x1
<b>USB (1)</b>	Type-A (1.1)	Type-A (1.1)	Type-A (1.1)
<b>Programming Memory</b>	6MB Flash EPROM	6MB Flash EPROM	8 MB Flash EPROM
<b>Backup Memory</b>	320kb SRAM	320kb SRAM	320kb SRAM
<b>Input Voltage</b>	24 VDC	24 VDC	24 VDC
<b>Power Consumption</b>	16.7 W (max)	16.7 W (max)	16.7 W (max)

No Suffix = no e-stop, no key

\* = e-stop color (RED, YEL, GRY) if desired

K = key designation (KEY) if desired

## HMI Accessories

Cables, Modules, Adapters,  
Storage Media, Fasteners, Gaskets

## Cables / Adapters

## Part Number to Order

**AGP3000H-ADPCOM-01** Conversion Adapter for interfacing with a GP3000H Cable Connector and External Output terminal block."

**CA3-CBL232/5M-01** Cable for RS-232C connection between various hosts and the GP4000 (5m)

**CA3-ADPCOM-01** COM 1 Pin conversion adapter on the GP3000

**CA3-ADPSEI-01** Adapter for SIEMENS MPI when using Profibus connector and cabling w/ AGP3000.

**CA3-ADPTRM-01** Connects output from a GP unit's Serial Interface (D-sub 9 pin socket) directly with an RS-422 terminal block.

**CA3-CBL422-01** Cable for RS-422 connection between various hosts and the GP4000 (Plug Type) (5m)

**CA3-CBL422/5M-01** Cable for RS-422 connection between various hosts and the GP4000 (Socket Type) (5m)

**CA3-CBLA-01** Cable for directly connecting an A Series CPU (5m)

**CA3-CBLCBT232-01** Cable for converting a D-Sub 9-pin plug to a D-Sub 25-pin socket (20cm)

**CA3-CBLCBT422-01** Connects a standard RS-422 cable (GP Connector,D-Sub 25-pin) to the GP (20cm)

**CA3-CBLFX/1M-01** Cable for directly connecting an FX Series CPU (1m)

**CA3-CBLFX/5M-01** Cable for directly connecting an FX Series CPU (5m)

**CA3-CBLLNKM-01** Cable for directly connecting a Q Series Link Unit (5m)

**CA3-CBLMLT-01** Connects a host controller to the GP for multi-link(n:1) communication

**CA3-CBLQ-01** Cable for directly connecting a Q Series CPU (5m)

**CA3-CBLSYS-01** Cable for directly connecting a SYSMAC Link Unit (5m)

**CA3-IS0232-01** Unit for connecting various hosts and the GP4000 by insulating

**CA3-IS0485-01** Unit for connecting various hosts and the GP3000 by insulating

**CA3-MDCB11** Cable for connecting a 2-port adapter to the GP3000 (5m)

**CA3-MPI-PG1-PFE** Connects a host controller to the GP for MPI communication.

**CA3-MPI-PGN-PFE** Connects a host controller to the GP for MPI communication.

**CA4-ADPONL-01** For COM 2 Termination adapter required for communication through the RS-422/485 connection

# HMI Accessories

Cables, Modules, Adapters,  
Storage Media, Fasteners, Gaskets

## Cables / Adapters

### Part Number to Order

<b>CA6-CBLTTY/5M-01</b>	Cable for connecting a PLC S5 series to the GP (5m)
<b>CA7-CBLCVRGB-01</b>	For converting DVI-A to RGB
<b>CA9-USBAMB/5M-01</b>	USB cable for RGB Input Unit touch panel operation (Host-Slave: Mini-B) (5m)
<b>FN-CABLE2010-31-MS</b>	Connects GP3000 units to the Flex Network modules
<b>FN-CABLE2050-31-MS</b>	Connects GP3000 units to the Flex Network modules
<b>FN-CABLE2200-31-MS</b>	Connects GP3000 units to the Flex Network modules
<b>FP-CV02-45</b>	For outputting image signal from host to GP (4.5m)
<b>FP-DV01-100</b>	For outputting image signal from host to GP (10m)
<b>FP-DV01-50</b>	For outputting image signal from host to GP (5m)
<b>GP070-MD11</b>	Interface unit required for simultaneous use of A/QnA/FX Series peripheral devices
<b>GP2000H-AP232</b>	Conversion adapter to connect GP operation data to RS-232C D-Sub and power/DIO terminals.
<b>GP2000H-AP422</b>	Conversion adapter to connect GP operation data to RS-422 and power/DIO terminals.
<b>GP3000-MPI21-PFE</b>	Connects a host controller to the GP for MPI communication (Online adapter is included in the package)
<b>GP3000-MPI21-PFE</b>	Connects a Siemens S7-200 CPU215+, S7-300, S7-400 (3.5m)
<b>GP3000H-CBLH-10M</b>	Heavy-duty type interface cable for communication between the GP and external equipment
<b>GP3000H-CBLHD-10M</b>	Heavy-duty type cable between the GP3000H Conversion Adapter and the GP3000H.
<b>GP3000H-CBLS-10M</b>	Standard type interface cable for communication between the GP and external equipment
<b>GP3000H-CBLS-3M</b>	Standard type interface cable for communication between the GP and external equipment
<b>GP3000H-CBLS-5M</b>	Standard type interface cable for communication between the GP and external equipment
<b>GP3000H-CBLSD-10M</b>	Standard type cable between the GP3000H Conversion Adapter and the GP3000H.
<b>GP3000H-CBLSD-3M</b>	Standard type cable between the GP3000H Conversion Adapter and the GP3000H.

# HMI Accessories

Cables, Modules, Adapters,  
Storage Media, Fasteners, Gaskets

## Cables / Adapters

<b>GP3000H-CBLSD-5M</b>	Standard type cable between the GP3000H Conversion Adapter and the GP3000H.
<b>GP3000H-CBLSD232-10M</b>	The cable between the GP2000H Series RS-232C Conversion Adapter and the GP3000H
<b>GP3000H-CBLSD232-3M</b>	The cable between the GP2000H Series RS-232C Conversion Adapter and the GP3000H
<b>GP3000H-CBLSD422-10M</b>	The cable between the GP2000H Series RS-422 Conversion Adapter and the GP3000H
<b>GP3000H-CBLSD422-3M</b>	The cable between the GP2000H Series RS-422 Conversion Adapter and the GP3000H
<b>HMI-CAB-ST52</b>	RS-232C Cable provides direct connection to Allen-Bradley SLC5/03, 5/04, Contrologix, & Compactlogix PLCs (12ft)
<b>HMI-CAB-ST52-30X</b>	RS-232C Cable provides direct connection to Allen-Bradley SLC5/03, 5/04, Contrologix, & Compactlogix PLCs (30ft)
<b>HMI-CAB-ST52-50X</b>	RS-232C Cable provides direct connection to Allen-Bradley SLC5/03, 5/04, Contrologix, & Compactlogix PLCs (50ft)
<b>PFXZCBADTM1</b>	Connects output from a GP unit's Serial Interface (D-sub 9 pin plug) directly with an RS-422 terminal block.
<b>PFXZCBCBCVR41</b>	Cable for converting a D-Sub 9-pin plug to a D-Sub 25-pin socket (20cm)
<b>PFXZCBCBMD1</b>	Connects Mitsubishi PLC directly to the GP4000 (D-sub 9 pin plug) using 2 port adapter II (RS-422) (5m)
<b>PFXZCBCBML1</b>	Connects a host controller directly to the GP4000 (D-sub 9 pin plug) for multi-link (n:1) communication.
<b>PFXZLMCBRJ21</b>	Cable with loose wires at one end for RS-232C connection between various hosts and the LT (5m)
<b>PFXZLMCBRJ81</b>	Cable with loose wires at one end for RS-485 connection between various hosts and the LT (5m)
<b>PFXZXMADSM31</b>	Cable with hook to install a rear module on a DIN rail while connecting rear module to a separated display module (3m)
<b>PFXZXMADSM51</b>	Cable with hook to install a rear module on a DIN rail while connecting rear module to a separated display module (5m)
<b>ST03-A2B-MPI21-PFE</b>	Connects a host controller to the GP for MPI communication.
<b>ZC9CBA51</b>	Connects the GP directly to the CPU programming port on the Mitsubishi Electric PLC A/ QnA series (5m)
<b>ZC9CBFP21</b>	Connects the GP directly to the CPU port on the Panasonic Electric Works PLC FP series (2m)
<b>ZC9CBFX11</b>	Connect the GP directly to the CPU programming port on the Mitsubishi Electric PLC FX series (1m)
<b>ZC9CBFX51</b>	Connect the GP directly to the CPU programming port on the Mitsubishi Electric PLC FX series (5m)
<b>ZC9CBQ31</b>	Connects the GP directly to the CPU programming port on the Mitsubishi Electric PLC Q series (3m)

# HMI Accessories

Cables, Modules, Adapters,  
Storage Media, Fasteners, Gaskets

## Modules / Expansion / FLEX

<b>EXM-DDI8DT</b>	8-point sink-source shared type expansion unit
<b>EXM-DDI16DT</b>	16-point sink-source shared type expansion unit
<b>CA5-PFSALL/EX-01</b>	Expansion unit enables GP in the PROFIBUS network and communication with the PROFIBUS DP master
<b>CA6-DNSALL/EX-01</b>	Expansion unit enables GP in the DeviceNet network and communication with the DeviceNet master
<b>CA7-CCLALL/EX-01</b>	Expansion unit enables GP in the CC-Link network and communication with the CC-Link master
<b>CA8-CANLT-01</b>	Master unit to connect to a slave unit supporting CANopen
<b>CA9-CANALL/EX-01</b>	Expansion unit enables GP in the CANopen network and communication with the CANopen master
<b>EXM-ALM3LT</b>	2-ch analog input/ 1-ch analog output type expansion unit
<b>EXM-AMI2HT</b>	2-ch analog input type expansion unit
<b>EXM-AMI4LT</b>	4-ch Voltage, Current, Temperature Expansion Unit
<b>EXM-AMM3HT</b>	2-ch analog input/ 1-ch analog output type expansion unit
<b>EXM-AMM6HT</b>	4-ch analog input/ 2-ch analog output expansion unit
<b>EXM-AM01HT</b>	1-ch analog output type expansion unit
<b>EXM-ARI8LT</b>	8-ch temperature input type expansion unit
<b>EXM-AV02HT</b>	2-ch analog output type expansion unit
<b>EXM-DD016TK</b>	16-point transistor output source type expansion unit
<b>EXM-DD016UK</b>	16-point transistor output sink type expansion unit
<b>EXM-DD08TT</b>	8-point transistor output source type expansion unit
<b>EXM-DD08UT</b>	8-point transistor output sink type expansion unit
<b>EXM-DMM24DRF</b>	16-point input sink-source/ 8-point relay output mixed I/O type expansion unit
<b>EXM-DMM8DRT</b>	4-point input sink-source and 4-point relay output type expansion unit (1 common) mixed I/O unit
<b>EXM-DRA16RT</b>	16-point relay output (2 common) type expansion unit
<b>EXM-DRA8RT</b>	8-point relay output (2 common) type expansion unit



## HMI Accessories

Cables, Modules, Adapters,  
Storage Media, Fasteners, Gaskets

## Modules / Expansion / FLEX

<b>FN-AD02AH41</b>	Converts 2-channel analog signals to digital signals
<b>FN-AD04AH11</b>	Converts 4-channel analog signals to digital signals
<b>FN-DA02AH41</b>	Converts 2-channel 12-bit digital signals to analog signals and outputs the result
<b>FN-DA04AH11</b>	Converts 4-channel 12-bit digital signals to analog signals and outputs the result
<b>FN-X32TS41</b>	I/O unit of 32-point input sink/source sharing type
<b>FN-XY16SC41</b>	Input/output combination I/O unit of 16-point input sink/source and 16-point transistor output Source type
<b>FN-XY16SK41</b>	Input/output combination I/O unit of 16-point input sink/source and 16-point transistor output Sink type
<b>FN-XY32SKS41</b>	Input/output combination I/O unit of 32-point input sink/source and 32-point transistor output Sink type
<b>GP3000-DVI01</b>	For inputting DVI to GP
<b>GP3000-VM01</b>	Video-Mix Unit (262,000 colors, Video Input x 4ch, DVI Input x 1ch, DVI Output x 1ch, VGA/SVGA/XGA)
<b>HTB1C0DM9LP</b>	Slave unit supporting CANopen with 12 digital inputs, 6 relay outputs and 2 transistor source outputs.

## Storage/ Misc.

<b>CA3-CFCALL/256MB-01</b>	CF Card (256MB)
<b>CA3-CFCALL/512MB-01</b>	CF Card (512MB)
<b>CA3-DFS12-01</b>	Disposable, dirt-resistant sheet for the GP unit's screen (5 sheets/set)
<b>CA3-DFS15-01</b>	Disposable, dirt-resistant sheet for the GP unit's screen (5 sheets/set)
<b>CA3-DFS6-01</b>	Sheet for protecting the front of the display unit from fingerprints, water droplets, powders, dust, & oil mist (5 pcs/ set)
<b>CA3-USBCB-01</b>	Cable for transferring screen data between a PC (USB Type A) and the GP unit (USB Type A) (2m)
<b>CA4-ATM10-01</b>	Panel cutout adapter for mounting 10.4-inch GP in cutout for GP-2500/2600 series.
<b>CA4-ATM5-01</b>	Panel cutout adapter for mounting a 5.7-inch display unit in cutout for LT Series (Type A/B/B+/C/H) and GP-37W2B
<b>CA5-DFS10-01</b>	Disposable, dirt-resistant sheet for the GP unit's screen (5 sheets/set)
<b>CA5-USBATM-01</b>	USB Cable clamp for 1 port products to prevent disconnection.

## HMI Accessories

Cables, Modules, Adapters,  
Storage Media, Fasteners, Gaskets

## Storage / Misc.

<b>CA5-USBEXT-01</b>	Extension cable for attaching to USB port on front panel (1m)
<b>CA6-CFCALL/1GB-01</b>	CF Card (1GB)
<b>CA6-DFS4-01</b>	Disposable, dirt-resistant sheet for the GP unit screen (5 sheets/set)
<b>CA6-USB232-01</b>	Cable for converting a GP unit's USB interface into a serial interface (RS-232C). (50cm)
<b>CA7-DFS12-01</b>	Disposable, dirt-resistant sheet for the GP unit screen (5 sheets/set)
<b>CA7-TPPEN/ALL-01</b>	5 touch pens for screen operation.
<b>CA8-CFCALL/2GB-01</b>	CF Card (2GB)
<b>CA8-USBATALL-01</b>	USB Cable clamp for 1 port products to prevent disconnection.
<b>CA9-USBATRGB/MB-01</b>	Disconnection prevention clamp for the RGB Input USB (miniB) Cable (2 pcs/set)
<b>FP-US00</b>	Connects a USB printer (TYPE-B) (5m)
<b>GP077-CFAD10</b>	Used for read/write of CF Card data via a PC's PCMCIA slot.
<b>GP077-SDAD10</b>	Adapter for converting the audio output section to the AUX connector to a pin jack
<b>GP2000H-STRAP11</b>	Strap for wearing over the neck.
<b>GP3000-EXDM01</b>	Memory used for expanding GP-Pro EX alarm and character table functions
<b>GP3000H-DFS6-01</b>	Disposable, dirt-resistant sheet for the GP unit's screen. (5 sheets/set) (Hard type)
<b>GP3000H-WMA-01</b>	Bracket for mounting the GP3000H Series unit to a commercially available arm or panel.
<b>HMI-CAB-ETH</b>	Directly connect via Ethernet either the PC to the HMI for programming or the HMI to the PLC for communications (5m)
<b>HMI-CAB-ST001</b>	Connects DB9 COM port with 9 open ended wires for connecting to 3rd party screw terminal devices (5m)
<b>PFXZCBCBCVUSR41</b>	Cable for connecting a GP unit (USB Type A) with an external device (RS-422/RS-485)
<b>PFXZCBDS101</b>	Disposable, dirt-resistant sheet for the GP unit screen (5 sheets/set)
<b>PFXZCBDS61</b>	Disposable, dirt-resistant sheet for the GP unit screen (5 sheets/set)
<b>PFXZCBDS71</b>	Disposable, dirt-resistant sheet for the GP unit screen (5 sheets/set)

## HMI Accessories

Cables, Modules, Adapters,  
Storage Media, Fasteners, Gaskets

## Storage / Misc.

<b>PFXZCBDS72</b>	Disposable, dirt-resistant sheet for the GP unit screen (5 sheets/set)
<b>PFXZCBOP101</b>	Disposable, environmental resistant cover for 10.4 inch (1 sheet/set)
<b>PFXZCBOP121</b>	Disposable, environmental resistant cover for 12.1 inch (1 sheet/set)
<b>PFXZCBOP41</b>	Disposable, environmental resistant cover for 3.5 inch (1 sheet/set)
<b>PFXZCBOP61</b>	Disposable, environmental resistant cover for 5.7 inch (1 sheet/set)
<b>PFXZCBOP71</b>	Disposable, environmental resistant cover for 7.0/7.5 inch (1 sheet/set)
<b>PFXZCBSD4GC41</b>	SD Memory Card (4 GB, CLASS4)
<b>PFXZCDAT72</b>	Panel cutout adapter for mounting 7-inch Wide Advanced Display in cutout for GP-2400, GP-3400, and GP-4400 Series.
<b>PFXZCDCNAUX1</b>	AUX connector required in case an external output is used (5 pcs/set)
<b>PFXZCDCVUS1</b>	Front USB cover with fixing screw, corresponding to IP66f, IP67f, Type 1/4X. Indoor use only. (5 pieces/set)
<b>PFXZCDDS102</b>	Disposable, dirt-resistant sheet for the display (5 sheets/set)
<b>PFXZCDDS122</b>	Disposable, dirt-resistant sheet for the display (5 sheets/set)
<b>PFXZCDSCCFA321</b>	CFast Card (32 GB, SLC)
<b>PFXZGPFSR10W1</b>	Overlay (Front Sheet) for Flat mount of GP4000 Rear Mount model (Color: White, 1 piece)
<b>PFXZGPFSR12W1</b>	Overlay (Front Sheet) for Flat mount of GP4000 Rear Mount model (Color: White, 1 piece)
<b>PFXZGPFSR6W1</b>	Overlay (Front Sheet) for Flat mount of GP4000 Rear Mount model (Color: White, 1 piece)
<b>PFXZGPFSR7W1</b>	Overlay (Front Sheet) for Flat mount of GP4000 Rear Mount model (Color: White, 1 piece)
<b>PS400-DF00</b>	Disposable, dirt-resistant sheet for the GP unit's screen (5 sheets/set)
<b>ZC9DS31</b>	Disposable, dirt-resistant sheet for the GP unit's screen (5 sheets/set)
<b>ZC9USCBMB1</b>	Cable for transferring screen data between a PC (USB Type A) and the GP unit (USB mini- B) (1.8 m)
<b>ZC9USCL1</b>	USB (Type A) Cable clamp for 1 port products to prevent disconnection (5 clamps/ set)
<b>ZC9USEXMB1</b>	Extension cable that attaches to the USB (mini-B) interface on the front side of the operation panel (1m)

# HMI Accessories

Cables, Modules, Adapters,  
Storage Media, Fasteners, Gaskets

## EZ Series

<b>CA5-USBEXT-01</b>	Extension cable attaching USB (Type A) interface to front panel (1m)
<b>PFXZCCA1</b>	Accessories Kit — Anti-rotation Tee, USB cable clamp to prevent disconnection (USB/B, 1 port), (5 pcs/each) Insert Label for EZ Illuminated Switch (3 pieces/sheet)
<b>PFXZCCA1KB1</b>	Accessories Kit — Anti-rotation Tee (5pcs), USB cable clamp to prevent disconnection (USB/mini-B, 1 port, 5pcs) Function Key Label for EZ Numpad (2pcs/sheet)
<b>PFXZCCAT1</b>	2mm spacer to adjust installation panel thickness (for EZ Illuminated Switch), with 22mm circular hole
<b>PFXZCCCVSS1</b>	A protective cover to protect the sensing screen of EZ Fingerprint Recognition Unit (5 pcs/set)
<b>PFXZCCNTSS1</b>	Nut to install EZ Fingerprint Recognition Unit (5 pcs/set)
<b>PFXZCDWGS1</b>	Provides dust and moisture resistance when EZ Illuminated Switch is installed into a solid panel (1 piece)
<b>PFXZCEATWM1</b>	Attachment mounts the EZ Series Unit on the wall. Please use it when holding the EZ Series in your hands
<b>PFXZGMNT1</b>	Nut for installation to a solid panel (10 pieces/set)
<b>PFXZGMSW1</b>	Socket wrench to tighten and loosen the installation nut (1 piece/set)
<b>XVGUZ02</b>	Cable lock to prevent disconnection of USB cable
<b>ZC9USCBMB1</b>	Cable for connecting from an EZ Tower Light to a Pro-face's interface unit (USB A/mini B) (1.8m)

# HMI Replacement Parts

Cables, Modules, Adapters,  
Storage Media, Fasteners, Gaskets

## Fasteners / Gaskets

<b>CA3-ATFALL-01</b>	Used to install the LT into a solid panel. (4 pcs/ set)
<b>CA3-WPG12-01</b>	Provides dust and moisture resistance when GP is installed into a solid panel
<b>CA3-WPG15-01</b>	Provides dust and moisture resistance when GP is installed into a solid panel
<b>CA3-WPG6-01</b>	Provides dust and moisture resistance when LT is installed into a solid panel
<b>CA3-WPG6-01</b>	Provides dust and moisture resistance when GP is installed into a solid panel
<b>CA5-WPG10-01</b>	Provides dust and moisture resistance when GP is installed into a solid panel
<b>CA5-WPG8-01</b>	Provides dust and moisture resistance when GP is installed into a solid panel
<b>GP3000H-WPGADP-01</b>	Provides dust and moisture resistance when GP3000H Conversion Adapter is installed into a solid panel
<b>PFXZCBAF1</b>	Used to install the GP into a solid panel (4 pieces/ set)
<b>PFXZCBWG101</b>	Provides dust and moisture resistance when GP is installed into a solid panel (1 piece)
<b>PFXZCBWG121</b>	Provides dust and moisture resistance when GP is installed into a solid panel (1 piece)
<b>PFXZCBWG41</b>	Provides dust and moisture resistance when GP is installed into a solid panel (1 piece)
<b>PFXZCBWG61</b>	Provides dust and moisture resistance when GP is installed into a solid panel (1 piece)
<b>PFXZCBWG71</b>	Provides dust and moisture resistance when GP is installed into a solid panel (1 piece)
<b>PFXZCDWG101</b>	Provides dust and moisture resistance when this product is installed into a solid panel (1 piece)
<b>PFXZCDWG102</b>	Provides dust and moisture resistance when this product is installed into a solid panel (1 piece)
<b>PFXZCDWG121</b>	Provides dust and moisture resistance when this product is installed into a solid panel (1 piece)
<b>PFXZCDWG122</b>	Provides dust and moisture resistance when this product is installed into a solid panel (1 piece)
<b>PFXZCDWG151</b>	Provides dust and moisture resistance when this product is installed into a solid panel (1 piece)
<b>PFXZCDWG72</b>	Provides dust and moisture resistance when this product is installed into a solid panel (1 piece)
<b>PFXZGPAFRL1</b>	Used to install the GP4000 Rear Mount model into a solid panel (2 pieces/set)
<b>PFXZGPAFRM1</b>	Used to install the GP4000 Rear Mount model into a solid panel (2 pieces/set)

## HMI Replacement Parts

Cables, Modules, Adapters,  
Storage Media, Fasteners, Gaskets

## Fasteners / Gaskets

<b>PFXZGPWGR1</b>	GP4000 Rear Mount model Installation Gasket (1 piece)
<b>ST400-WP01</b>	Provides dust and moisture resistance when LT is installed into a solid panel
<b>ZC9AF31</b>	Used to install the GP into a solid panel (2 pieces/ set)
<b>ZC9WG31</b>	Provides dust and moisture resistance when GP is installed into a solid panel (1 piece)

## Connectors

<b>CA5-AUXCNALL-01</b>	AUX connector for GP3000 series required in case an external output is used. (5 pcs/set)
<b>CA5-DCCNL-01</b>	Connector to connect power supply cables (5 pcs/set)
<b>CA5-DCCNM-01</b>	Connector for attaching power supply to medium-sized units (5 pcs/set)
<b>CA5-DCCNM-01</b>	Connector to connect power supply cables (5 pcs/set)
<b>CA6-DIOCN4-01</b>	Connector attached to the DIO interface. Connects an external I/O device. (5 pcs/ set)
<b>CA6-DIOCNALL-01</b>	Connector attached to the DIO interface. Connects an external I/O device. (5 pcs/set)
<b>CA6-FNCNALL-01</b>	Connector attached to the FLEX NETWORK interface. Connects a FLEX NETWORK communication cable. (5 pcs/set)
<b>CA7-DIOCN5-01</b>	Connector attached to the DIO interface. Connects an external I/O device. (5 pcs/ set)
<b>GLC-DIOCN03</b>	FN-XY32SK41 Connectors (2 pcs/set)
<b>PFXZCBCNDC1</b>	Connector to connect DC power supply cables (Straight type, 5pcs/set)
<b>PFXZCBCNDC2</b>	Right-angle connector to connect DC power supply cables (Angle type, 5pcs/set)
<b>PFXZGMCNDC1</b>	Connector to connect DC power supply cables (5 pcs/set)
<b>PFXZLMCNIO1</b>	I/O connector 15-pin (2 pcs/set) and I/O connector 6-pin (2 pcs/set)
<b>ZC9CMC1</b>	Connector for Serial I/F (1 piece)
<b>ZCACNDCS1</b>	Connector for attaching power supply to 3.4-inch GP units. (Set of 5 connectors)

## HMI Replacement Parts

Cables, Modules, Adapters,  
Storage Media, Fasteners, Gaskets

Storage / Misc.

<b>CA3-BLU12-01 *4</b>	Replacement backlight for main unit (1 pc.)
<b>CA3-BLU15-01 *3</b>	Replacement backlight for main unit (1 pc.)
<b>CA3-BUSCVR-01</b>	Protects the GP unit's rear face connector. (Large size and small size each in one set)
<b>CA5-BLU10T-01 *5</b>	Replacement backlight for main unit (1 pc.)
<b>CA5-USBATL-01</b>	USB Cable clamp to prevent disconnection (5 pcs/ set)
<b>CA6-BLU10T-02 *5</b>	Replacement backlight for main unit (1 pc.)
<b>CA6-EXMCNHE20P-01</b>	Connector for EX module (5 pcs/ set)
<b>CA6-EXMCNRS10P-01</b>	Connector for EX module (5 pcs/ set)
<b>CA6-EXMCNRS11P-01</b>	Connector for EX module (5 pcs/ set)
<b>CA7-FIXEXM-01</b>	Hook for securing three EX modules.
<b>CA7-HTBCNSET-01</b>	13-pin input connector and 16-pin output connector for HTB (each in one set)
<b>CA7-USBAT-01</b>	USB Cable clamp to prevent disconnection (5 pcs/ set)
<b>GP3000H-DUPS-01</b>	5 sheets/set (x 5) for changing image of the function switches.
<b>GP3000H-EMGD-01</b>	Emergency Switch Guard for preventing accidental operation.
<b>GP3000H-HS-01</b>	Strap for handheld operation.
<b>PFXGM4200TP</b>	For LT4000M/GP4000M Series Display Modular type, 3.5-inch
<b>PFXGM4300TP</b>	For LT4000M/GP4000M Series Display Modular type, 5.7-inch
<b>PFXLM4B01DAC</b>	LT4000M Analog model Rear Module, Source Output, DC24V (Main Unit)
<b>PFXLM4B01DAK</b>	LT4000M Analog model Rear Module, Sink Output, DC24V (Main Unit)
<b>PFXLM4B01DDC</b>	LT4000M DIO model Rear Module, Source Output, DC24V (Main Unit)
<b>PFXLM4B01DDK</b>	LT4000M DIO model Rear Module, Sink Output, DC24V (Main Unit)
<b>PFXZCBBT1</b>	Primary battery for memory and time data backup (1 piece)
<b>PFXZCBCLUSA1</b>	Clamp to prevent disconnection of USB cable (1 port, 5 pcs/set)



## HMI Replacement Parts

Cables, Modules, Adapters,  
Storage Media, Fasteners, Gaskets

## Storage / Misc.

<b>PFXZCDSCFA162</b>	CFast Card (16 GB, MLC) for System Card
<b>PFXZCDSD1GC61</b>	SD Memory Card (1 GB, SLC, Class 6) for System Card
<b>PFXZGMAK1</b>	Accessories Kit — Anti-rotation Tee, USB cable clamp to prevent disconnection (USB Type A, Mini B, for 1 port), 2mm-high spacer to adjust installation panel thickness (1pc/each)
<b>PFXZGMNT1</b>	Nut to install the display module (10 pcs/set)
<b>PFXZGMSW1</b>	Socket wrench to tighten and loosen the display installation nut (1 pc/set)
<b>PFXZXMADSA1</b>	DIN rail installation adapter for rear modules in non-display operation
<b>PS501S-BU00</b>	Replacement backlight for main unit (2 pcs/set)
<b>ZC9USCLMB1</b>	Clamp to prevent disconnection of USB cable (1 port, 5 pcs/set)

## EZ Series

<b>PFXZCDWGSG1</b>	Provides dust and moisture resistance when EZ Illuminated Switch is installed into a solid panel (1 piece)
<b>PFXZGMNT1</b>	Nut for installation to a solid panel (10 pieces/set)
<b>PFXZGMSW1</b>	Socket wrench to tighten and loosen the installation nut (1 piece/set)
<b>XVGUZ02</b>	Cable lock to prevent disconnection of USB cable